

**Molecular
Devices**

Together through life sciences.

MetaXpress[®] Software: Multi Wavelength Cell Scoring Module

Together through life sciences.

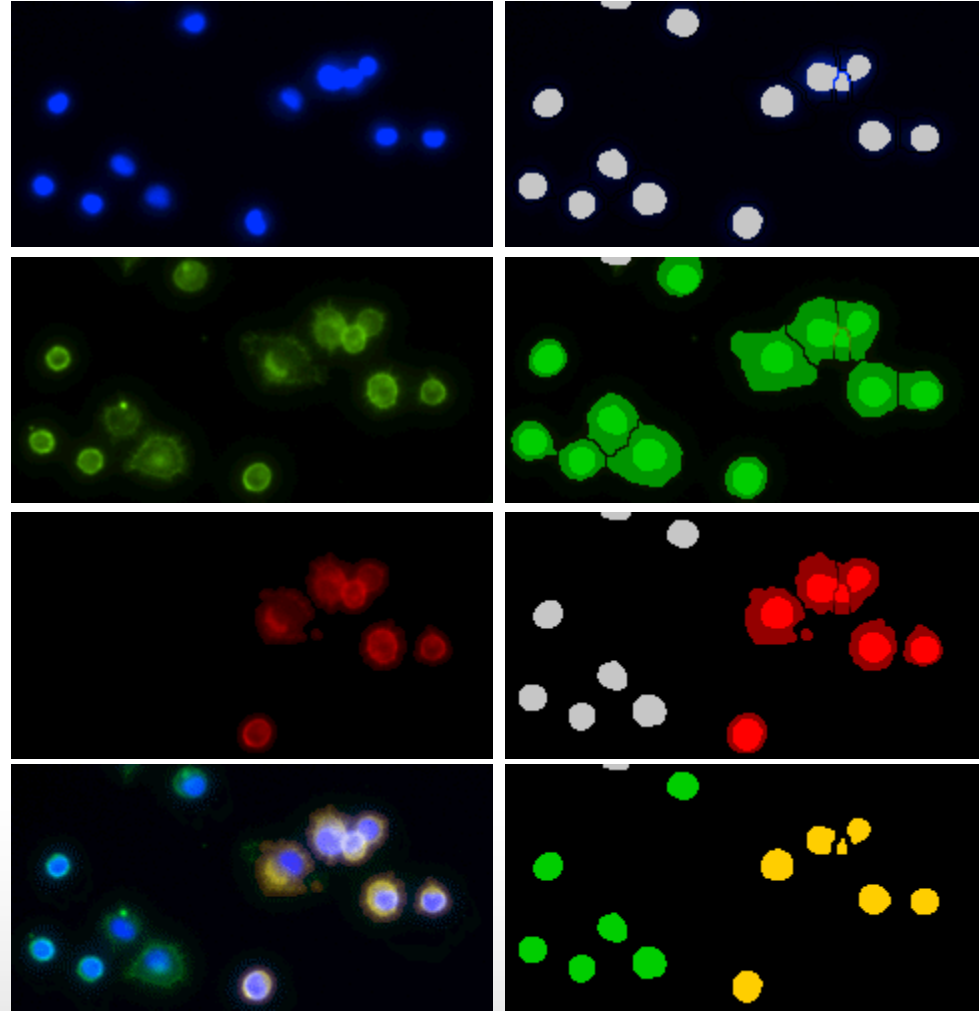
©2014 For research use only. Not for use in diagnostic procedures. Trademarks mentioned herein are property of Molecular Devices, LLC or their respective owners.

 **Molecular
Devices**

Multi Wavelength Cell Scoring (MWCS) Module

Overview

- The MWCS module can be used to analyze cells imaged in 1-7 wavelengths
- The first wavelength should always be a stain for all nuclei (e.g. DAPI, Hoechst, or DRAQ5)
- With just 1 wavelength, it can be used for basic cell counting
- With 2 or more wavelengths, it will score cells as positive or negative for each wavelength and assign it a “profile” of its score in each wavelength



Module Settings

Multi Wavelength Cell Scoring

Number of wavelengths: 3

Display result image: Segmen

Algorithm: Fast

All nuclei Annexin PI

Name: All nuclei

W1 Source image: DAPI

Legend color: Gray

Stained area: Nucleus

Approximate min width: 4 μm = 12 pixels

Approximate max width: 20 μm = 62 pixels

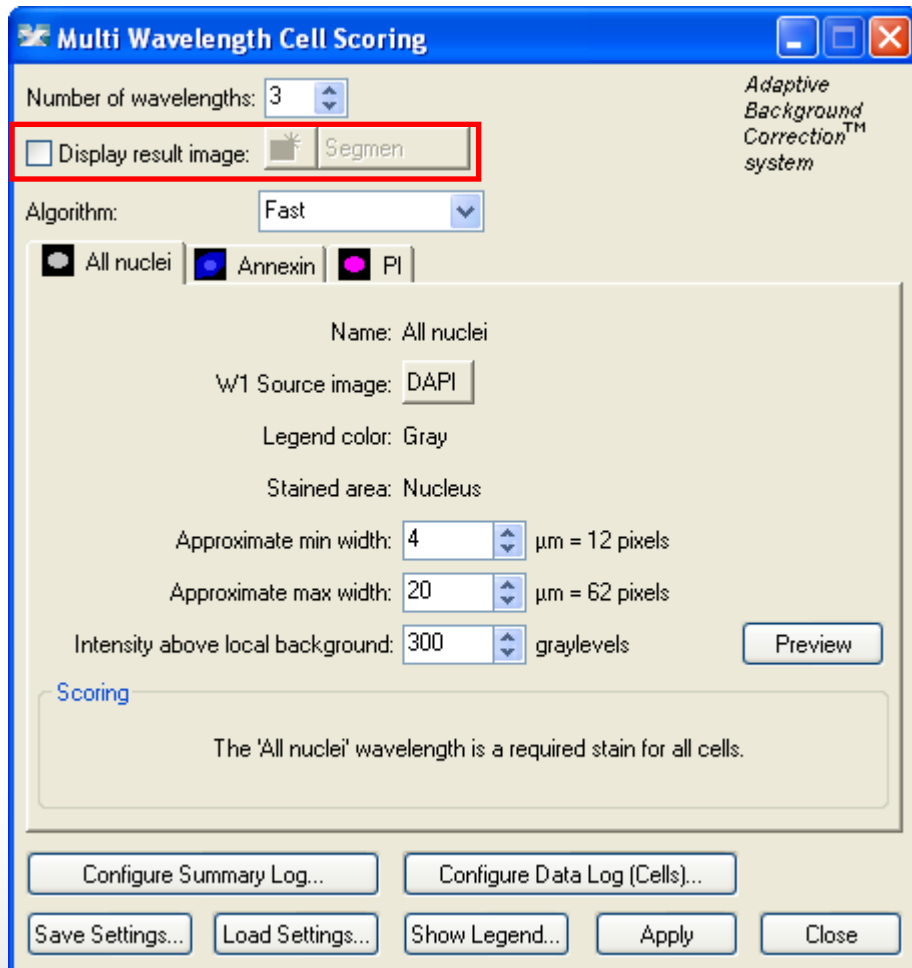
Intensity above local background: 300 graylevels

Scoring

The 'All nuclei' wavelength is a required stain for all cells.

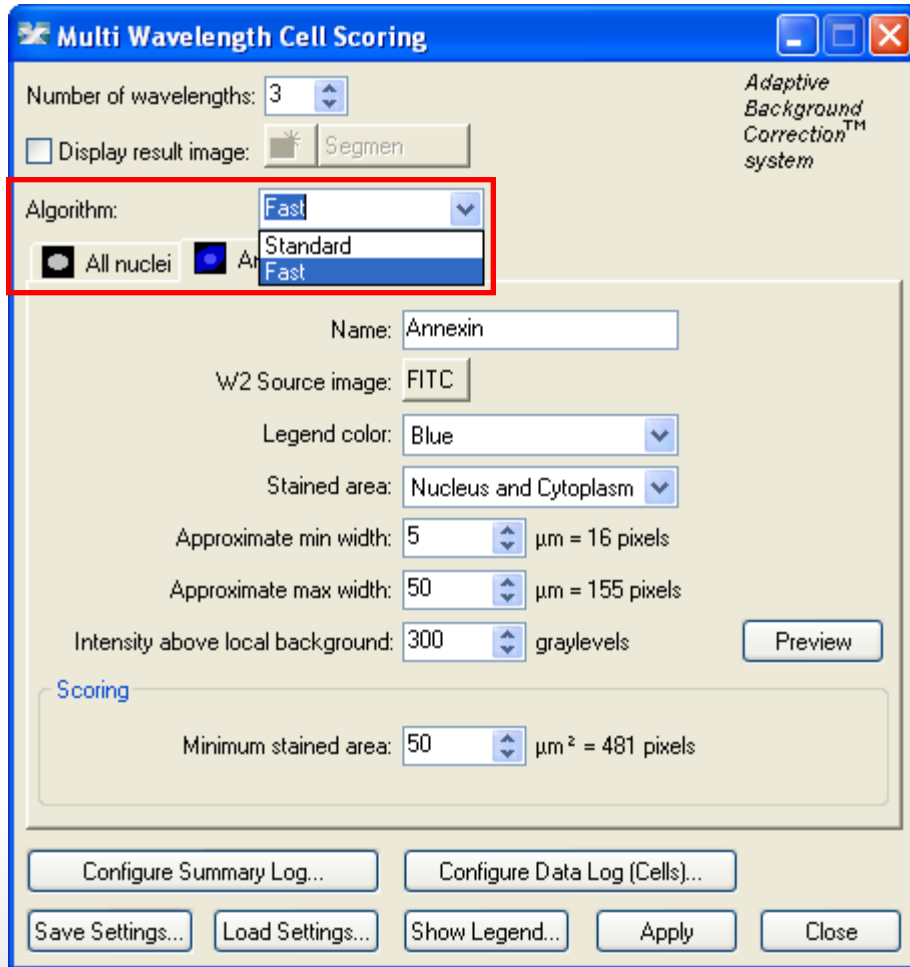
- **Number of wavelengths**
- This should be set to the total number of wavelengths to be analyzed (nuclei plus probes of interest)
- Up to 7 different wavelengths can be analyzed simultaneously (wavelengths may also be repeated with different settings)

Module Settings



- Display result image
- Leave “Display result image” deselected (this is generally only used when journaling)

Module Settings



Algorithm

- This option is only available in MetaXpress software version 4.0 and higher and determines how quickly the analysis is performed.
- **Fast** algorithm can perform analysis up to twice as fast as **Standard**.
- Both algorithms produce similar but not identical results.

Module Settings

Multi Wavelength Cell Scoring

Number of wavelengths: 3

Display result image: Segment

Algorithm: Fast

All nuclei Annexin PI

Name: All nuclei

W1 Source image: DAPI

Legend color: Gray

Stained area: Nucleus

Approximate min width: 4 μm = 12 pixels

Approximate max width: 20 μm = 62 pixels

Intensity above local background: 300 graylevels

Preview

Scoring

The 'All nuclei' wavelength is a required stain for all cells.

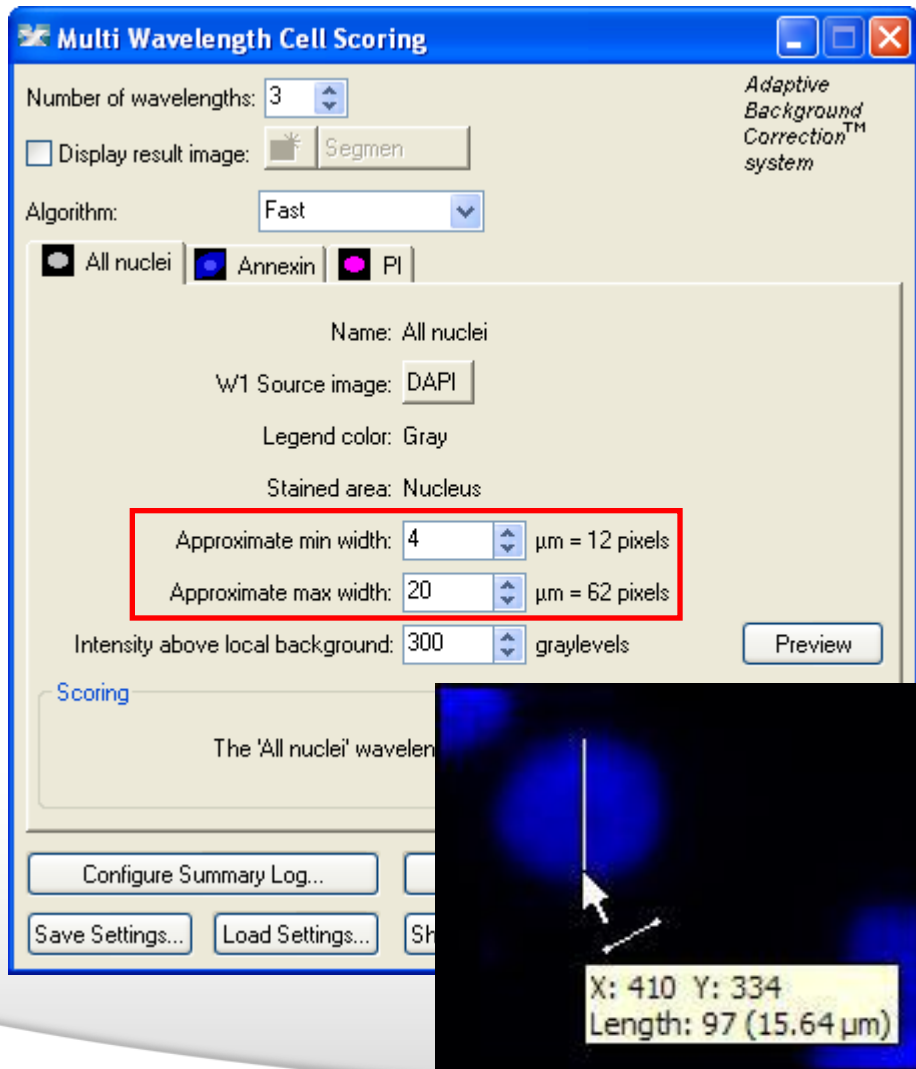
Configure Summary Log... Configure Data Log (Cells)...

Save Settings... Load Settings... Show Legend... Apply Close

Adaptive Background Correction™ system

- Wavelength 1 (W1)
- Select the wavelength for the nuclei (required)

Module Settings

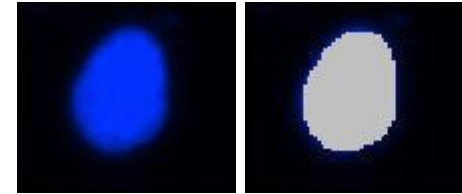


Wavelength 1 (W1)

- Set the **Approximate min width** and **Approximate max width** for the range of nuclei that you want to detect
- The width is the short axis of a nucleus (in μm)
- The region tools can be used to measure widths
- Much smaller cells will be ignored
- Much larger cells will be split

Module Settings

Effects of varying width settings



Min width too small: splits nuclei



Min width too large: omits smaller nuclei

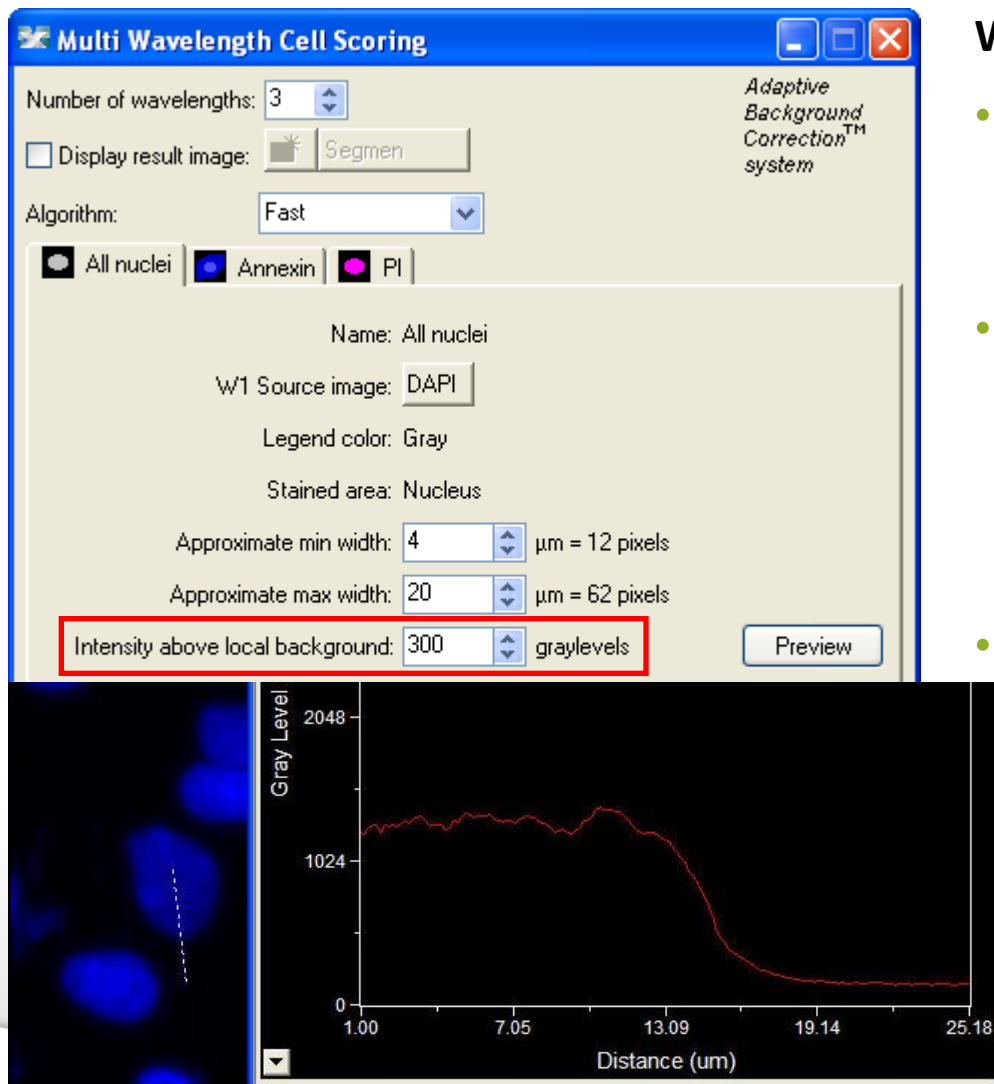
Max width too small: may shrink nuclear boundaries



Max width too large: may slightly enlarge nuclear boundaries



Module Settings



Multi Wavelength Cell Scoring

Number of wavelengths: 3

Display result image: Segmen

Algorithm: Fast

All nuclei Annexin PI

Name: All nuclei

W1 Source image: DAPI

Legend color: Gray

Stained area: Nucleus

Approximate min width: 4 μm = 12 pixels

Approximate max width: 20 μm = 62 pixels

Intensity above local background: 300 graylevels

Preview

Adaptive Background Correction™ system

Gray Level

2048

1024

0

Distance (μm)

1.00 7.05 13.09 19.14 25.18

Wavelength 1 (W1)

- The **intensity above local background** is used for finding the nuclei
- This value is a minimum and should be set slightly lower than the difference in intensity between a dim cell and its local background
- Draw a line across a cell into the background and use Measure > Linescan to determine intensity values; or simply mouse over the cell and the background and view the intensity values

Module Settings

Multi Wavelength Cell Scoring

Number of wavelengths: 3

Display result image: Segmen

Algorithm: Fast

All nuclei Annexin PI

Name: All nuclei

W1 Source image: DAPI

Legend color: Gray

Stained area: Nucleus

Approximate min width: 4 μm = 12 pixels

Approximate max width: 20 μm = 62 pixels

Intensity above local background: 300 graylevels

Preview

Scoring

The 'All nuclei' wavelength is a required stain for all cells.

Configure Summary Log... Configure Data Log (Cells)...

Save Settings... Load Settings... Show Legend... Apply Close

Adaptive Background Correction™ system

Wavelength 1 (W1)

- Click on **Preview** to test settings for the current wavelength only

Module Settings

Multi Wavelength Cell Scoring

Number of wavelengths: 3

Display result image: Segmen

Algorithm: Fast

All nuclei Annexin PI

Name: Annexin

W2 Source image: FITC

Legend color: Blue

Stained area: Nucleus and Cytoplasm

Approximate min width: 5 μm = 16 pixels

Approximate max width: 50 μm = 155 pixels

Intensity above local background: 300 graylevels

Preview

Scoring

Minimum stained area: 50 μm^2 = 481 pixels

Configure Summary Log... Configure Data Log (Cells)...

Save Settings... Load Settings... Show Legend... Apply Close

Adaptive Background Correction™ system

Wavelength 2 (W2)

- Enter a name and select wavelength and legend color for your 2nd wavelength (Annexin in this example)

Module Settings

Multi Wavelength Cell Scoring

Number of wavelengths: 3

Display result image: Segmen

Algorithm: Fast

All nuclei Annexin PI

Name: Annexin

W2 Source image: FITC

Legend color: Blue

Stained area: Nucleus and Cytoplasm

Approximate min width: 5 μm = 16 pixels

Approximate max width: 50 μm = 155 pixels

Intensity above local background: 300 graylevels

Preview

Scoring

Minimum stained area: 50 μm^2 = 481 pixels

Configure Summary Log... Configure Data Log (Cells)...

Save Settings... Load Settings... Show Legend... Apply Close

Adaptive Background Correction™ system

Wavelength 2 (W2)

- Define **Stained area**:
 - Nucleus (stain matches W1 area)
 - Cytoplasm (stain is surrounding but not including W1 area)
 - Nucleus and Cytoplasm (stain encompasses W1 and surrounding area)

Module Settings

Multi Wavelength Cell Scoring

Number of wavelengths: 3

Display result image: Segmen

Algorithm: Fast

All nuclei Annexin PI

Name: Annexin

W2 Source image: FITC

Legend color: Blue

Stained area: Nucleus and Cytoplasm

Approximate min width: 5 μm = 16 pixels

Approximate max width: 50 μm = 155 pixels

Intensity above local background: 300 graylevels

Preview

Scoring

Minimum stained area: 50 μm^2 = 481 pixels

Configure Summary Log... Configure Data Log (Cells)...

Save Settings... Load Settings... Show Legend... Apply Close

Adaptive Background Correction™ system

Wavelength 2 (W2)

- Set the **Approximate min width** and **Approximate max width** for the stain of interest
- For a nuclear stain, use the same settings as W1
- For a cytoplasmic or nuclear + cytoplasmic stain, measure the whole cell the same way you measured the nucleus for W1

Module Settings

Multi Wavelength Cell Scoring

Number of wavelengths: 3

Display result image: Segmen

Algorithm: Fast

All nuclei Annexin PI

Name: Annexin

W2 Source image: FITC

Legend color: Blue

Stained area: Nucleus and Cytoplasm

Approximate min width: 5 μm = 16 pixels

Approximate max width: 50 μm = 155 pixels

Intensity above local background: 300 graylevels

Preview

Scoring

Minimum stained area: 50 μm^2 = 481 pixels

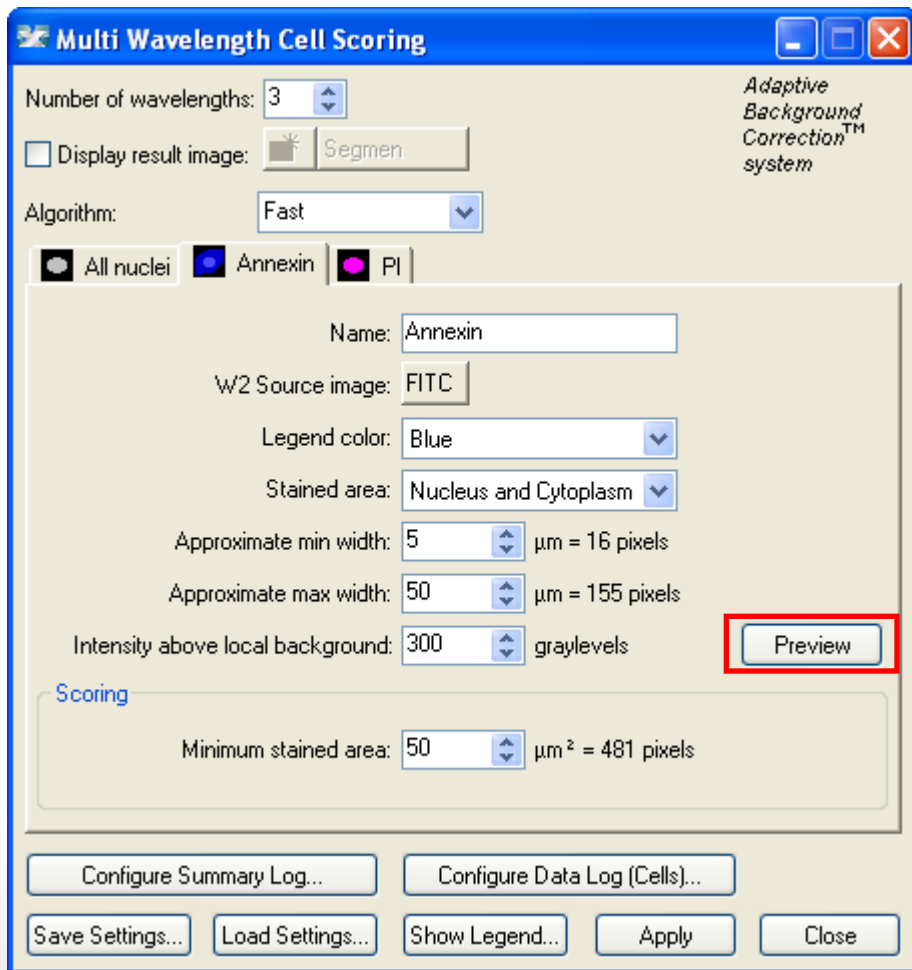
Configure Summary Log... Configure Data Log (Cells)...

Save Settings... Load Settings... Show Legend... Apply Close

Wavelength 2 (W2)

- Intensity above local background for the stain of interest is used to distinguish positive from negative cells
- Measure the stain intensity vs background just as for W1
- Check both positive and negative control images to help set a suitable cutoff

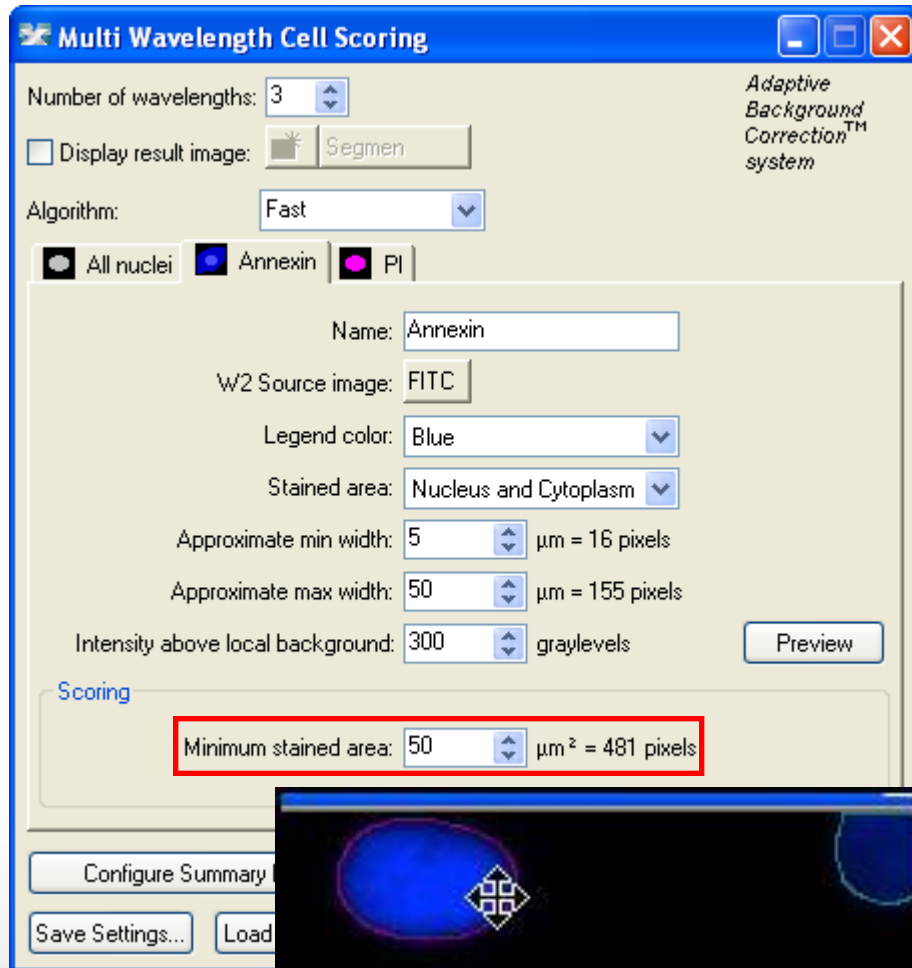
Module Settings



Wavelength 2 (W2)

- Click on **Preview** to test settings for the current wavelength only
- Note that this may not accurately segment the cells as this Preview does not use the nuclear staining
- This is most useful for testing the Intensity settings for this wavelength

Module Settings



Wavelength 2 (W2)

- **Minimum stained area** is an additional criteria for separating positive from negative cells
- To be scored as positive, a cell must be stained across this area (or larger)
- This helps eliminate false positives from cells with a small speck of very bright debris
- Use the elliptical region tool to measure the area of a small cell in the image



Module Settings

Multi Wavelength Cell Scoring

Number of wavelengths: 3

Display result image: Segmen

Algorithm: Fast

All nuclei Annexin PI

Name: PI

W3 Source image: TRITC

Legend color: Magenta

Stained area: Nucleus

Approximate min width: 4 μm = 12 pixels

Approximate max width: 20 μm = 62 pixels

Intensity above local background: 500 graylevels

Preview

Scoring

Minimum stained area: 20 μm^2 = 192 pixels

Configure Summary Log... Configure Data Log (Cells)...

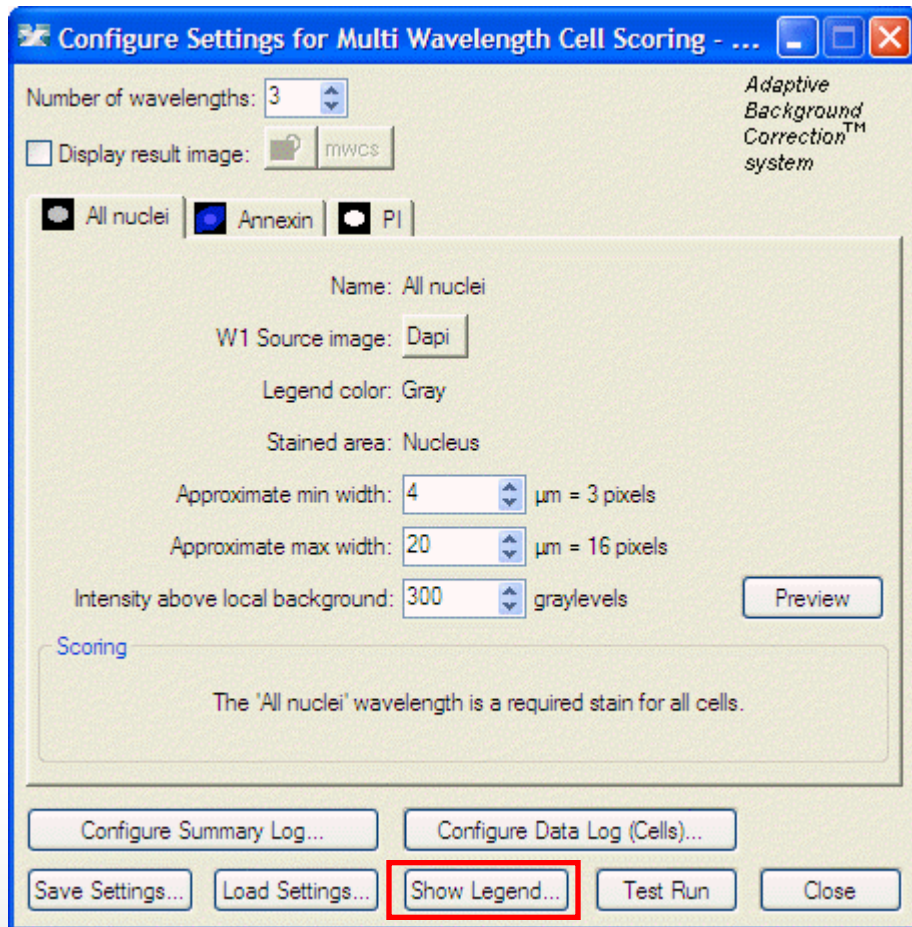
Save Settings... Load Settings... Show Legend... Apply Close

Adaptive Background Correction™ system

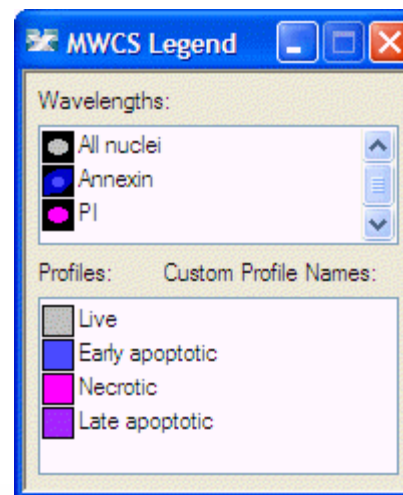
Wavelength 3 (W3) and subsequent wavelengths

- Follow the same steps to configure the settings for wavelength 3 (PI in this example)

Module Settings



- Show Legend
- Optionally name each profile



Module Settings – General Settings

Configure Settings for Multi Wavelength Cell Scoring - ...

Number of wavelengths: 3

Adaptive Background Correction™ system

Display result image: mwcs

All nuclei Annexin PI

Name: All nuclei

W1 Source image: Dapi

Legend color: Gray

Stained area: Nucleus

Approximate min width: 4 μm = 3 pixels

Approximate max width: 20 μm = 16 pixels

Intensity above local background: 300 graylevels

Preview

Scoring

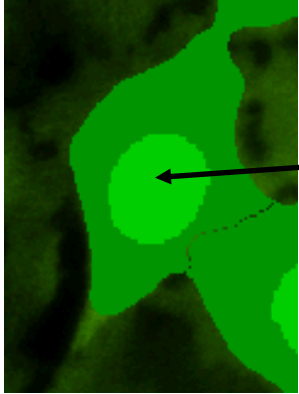
The 'All nuclei' wavelength is a required stain for all cells.

Configure Summary Log... Configure Data Log (Cells)...

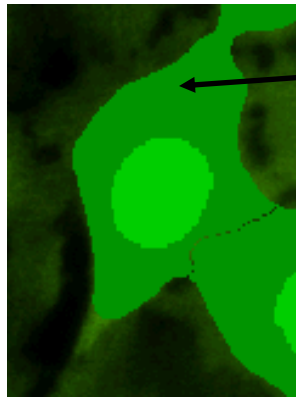
Save Settings... Load Settings... Show Legend... Test Run Close

- **Configure Summary Log** – select site-by-site measurements
- **Configure Data Log** – select cell-by-cell measurements
- **Save Settings** – save analysis parameters to database
- **Load Settings** – load saved analysis parameters
- **Set to Defaults** – restore default analysis parameters
- **Test Run** – test all settings together and display cell-by-cell results for this site

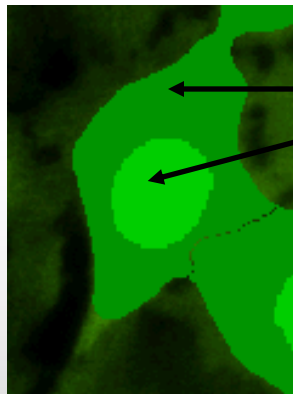
Regions for Measurement



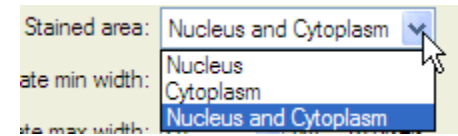
Nucleus



Cytoplasm



Stained Area (as defined in settings)



Cell (nucleus + cytoplasm)

Summary Data (site-by-site measurements)

✓ Total Cells	✓ All W3 Mean Cyto Integr Intens
✓ All Cells Mean Area	✓ All W3 Mean Cyto Aver Intens
✓ All Nuclei Mean Area	✓ All W3 Mean Cell Integr Intens
✓ All Nuclei Mean Integr Intensity	✓ All W3 Mean Cell Aver Intens
✓ All Nuclei Mean Average Intensity	✓ Positive W3 Mean Stain Area
✓ All W2 Mean Stain Area	✓ Positive W3 Mean Stain Integr Intens
✓ All W2 Mean Stain Integr Intens	✓ Positive W3 Mean Stain Aver Intens
✓ All W2 Mean Stain Aver Intens	✓ Positive W3 Mean Nucl Integr Intens
✓ All W2 Mean Nucl Integr Intens	✓ Positive W3 Mean Nucl Aver Intens
✓ All W2 Mean Nucl Aver Intens	✓ Positive W3 Mean Cyto Integr Intens
✓ All W2 Mean Cyto Integr Intens	✓ Positive W3 Mean Cyto Aver Intens
✓ All W2 Mean Cyto Aver Intens	✓ Positive W3 Mean Cell Integr Intens
✓ All W2 Mean Cell Integr Intens	✓ Positive W3 Mean Cell Aver Intens
✓ All W2 Mean Cell Aver Intens	✓ Negative W3 Mean Stain Area
✓ Positive W2 Mean Stain Area	✓ Negative W3 Mean Stain Integr Intens
✓ Positive W2 Mean Stain Integr Intens	✓ Negative W3 Mean Stain Aver Intens
✓ Positive W2 Mean Stain Aver Intens	✓ Negative W3 Mean Nucl Integr Intens
✓ Positive W2 Mean Nucl Integr Intens	✓ Negative W3 Mean Nucl Aver Intens
✓ Positive W2 Mean Nucl Aver Intens	✓ Negative W3 Mean Cyto Integr Intens
✓ Positive W2 Mean Cyto Integr Intens	✓ Negative W3 Mean Cyto Aver Intens
✓ Positive W2 Mean Cyto Aver Intens	✓ Negative W3 Mean Cell Integr Intens
✓ Positive W2 Mean Cell Integr Intens	✓ Negative W3 Mean Cell Aver Intens
✓ Positive W2 Mean Cell Aver Intens	✓ Positive W3
✓ Negative W2 Mean Stain Area	✓ % Positive W3
✓ Negative W2 Mean Stain Integr Intens	✓ Scoring Profile 1-
✓ Negative W2 Mean Stain Aver Intens	✓ Scoring Profile 12-
✓ Negative W2 Mean Nucl Integr Intens	✓ Scoring Profile 1-3
✓ Negative W2 Mean Nucl Aver Intens	✓ Scoring Profile 123
✓ Negative W2 Mean Cyto Integr Intens	✓ Percentage Scoring Profile 1-
✓ Negative W2 Mean Cyto Aver Intens	✓ Percentage Scoring Profile 12-
✓ Negative W2 Mean Cell Integr Intens	✓ Percentage Scoring Profile 1-3
✓ Negative W2 Mean Cell Aver Intens	✓ Percentage Scoring Profile 123
✓ Positive W2	✓ Subtotal Profile 1xx
✓ % Positive W2	✓ Subtotal Profile 12x
✓ All W3 Mean Stain Area	✓ Subtotal Profile 1x3
✓ All W3 Mean Stain Integr Intens	✓ Subtotal Profile 123
✓ All W3 Mean Stain Aver Intens	✓ Percentage Subtotal Profile 1xx
✓ All W3 Mean Nucl Integr Intens	✓ Percentage Subtotal Profile 12x
✓ All W3 Mean Nucl Aver Intens	✓ Percentage Subtotal Profile 1x3
✓ All W3 Mean Cell Integr Intens	✓ Percentage Subtotal Profile 123

- **Total cells:** Total number of nuclei (cell count)
- **All Cells Mean Area:** The average area of the cell (nucleus + cytoplasm) for all cells found in the image (in μm^2)
- **All Nuclei Mean Area:** The average area of nucleus for all cells found in the image (in μm^2)

Summary Data (site-by-site measurements)

✓ Total Cells	✓ All W3 Mean Cyto Integr Intens
✓ All Cells Mean Area	✓ All W3 Mean Cyto Aver Intens
✓ All Nuclei Mean Area	✓ All W3 Mean Cell Integr Intens
✓ All Nuclei Mean Integr Intensity	✓ All W3 Mean Cell Aver Intens
✓ All Nuclei Mean Average Intensity	✓ Positive W3 Mean Stain Area
✓ All W2 Mean Stain Area	✓ Positive W3 Mean Stain Integr Intens
✓ All W2 Mean Stain Integr Intens	✓ Positive W3 Mean Stain Aver Intens
✓ All W2 Mean Stain Aver Intens	✓ Positive W3 Mean Nucl Integr Intens
✓ All W2 Mean Nucl Integr Intens	✓ Positive W3 Mean Nucl Aver Intens
✓ All W2 Mean Nucl Aver Intens	✓ Positive W3 Mean Cyto Integr Intens
✓ All W2 Mean Cyto Integr Intens	✓ Positive W3 Mean Cyto Aver Intens
✓ All W2 Mean Cyto Aver Intens	✓ Positive W3 Mean Cell Integr Intens
✓ All W2 Mean Cell Integr Intens	✓ Positive W3 Mean Cell Aver Intens
✓ All W2 Mean Cell Aver Intens	✓ Negative W3 Mean Stain Area
✓ Positive W2 Mean Stain Area	✓ Negative W3 Mean Stain Integr Intens
✓ Positive W2 Mean Stain Integr Intens	✓ Negative W3 Mean Stain Aver Intens
✓ Positive W2 Mean Stain Aver Intens	✓ Negative W3 Mean Nucl Integr Intens
✓ Positive W2 Mean Nucl Integr Intens	✓ Negative W3 Mean Nucl Aver Intens
✓ Positive W2 Mean Nucl Aver Intens	✓ Negative W3 Mean Cyto Integr Intens
✓ Positive W2 Mean Cyto Integr Intens	✓ Negative W3 Mean Cyto Aver Intens
✓ Positive W2 Mean Cyto Aver Intens	✓ Negative W3 Mean Cell Integr Intens
✓ Positive W2 Mean Cell Integr Intens	✓ Negative W3 Mean Cell Aver Intens
✓ Positive W2 Mean Cell Aver Intens	✓ Positive W3
✓ Negative W2 Mean Stain Area	✓ % Positive W3
✓ Negative W2 Mean Stain Integr Intens	✓ Scoring Profile 1-
✓ Negative W2 Mean Stain Aver Intens	✓ Scoring Profile 12-
✓ Negative W2 Mean Nucl Integr Intens	✓ Scoring Profile 1-3
✓ Negative W2 Mean Nucl Aver Intens	✓ Scoring Profile 123
✓ Negative W2 Mean Cyto Integr Intens	✓ Percentage Scoring Profile 1-
✓ Negative W2 Mean Cyto Aver Intens	✓ Percentage Scoring Profile 12-
✓ Negative W2 Mean Cell Integr Intens	✓ Percentage Scoring Profile 1-3
✓ Negative W2 Mean Cell Aver Intens	✓ Percentage Scoring Profile 123
✓ Positive W2	✓ Subtotal Profile 1xx
✓ % Positive W2	✓ Subtotal Profile 12x
✓ All W3 Mean Stain Area	✓ Subtotal Profile 1x3
✓ All W3 Mean Stain Integr Intens	✓ Subtotal Profile 123
✓ All W3 Mean Stain Aver Intens	✓ Percentage Subtotal Profile 1xx
✓ All W3 Mean Nucl Integr Intens	✓ Percentage Subtotal Profile 12x
✓ All W3 Mean Nucl Aver Intens	✓ Percentage Subtotal Profile 1x3
✓ All W3 Mean Cyto Integr Intens	✓ Percentage Subtotal Profile 123

- **All Nuclei Mean Integr Intensity:**
The total pixel intensity of the nuclear stain over the nuclear area, divided by the total number of cells
- **All Nuclei Mean Average Intensity:**
The average pixel intensity of the nuclear stain over all the nuclear areas in the image

Summary Data (site-by-site measurements)

✓ Total Cells	✓ All W3 Mean Cyto Integr Intens
✓ All Cells Mean Area	✓ All W3 Mean Cyto Aver Intens
✓ All Nuclei Mean Area	✓ All W3 Mean Cell Integr Intens
✓ All Nuclei Mean Integr Intensity	✓ All W3 Mean Cell Aver Intens
✓ All Nuclei Mean Average Intensity	✓ Positive W3 Mean Stain Area
✓ All W2 Mean Stain Area	✓ Positive W3 Mean Stain Integr Intens
✓ All W2 Mean Stain Integr Intens	✓ Positive W3 Mean Stain Aver Intens
✓ All W2 Mean Stain Aver Intens	✓ Positive W3 Mean Nucl Integr Intens
✓ All W2 Mean Nucl Integr Intens	✓ Positive W3 Mean Nucl Aver Intens
✓ All W2 Mean Nucl Aver Intens	✓ Positive W3 Mean Cyto Integr Intens
✓ All W2 Mean Cyto Integr Intens	✓ Positive W3 Mean Cyto Aver Intens
✓ All W2 Mean Cyto Aver Intens	✓ Positive W3 Mean Cell Integr Intens
✓ All W2 Mean Cell Integr Intens	✓ Positive W3 Mean Cell Aver Intens
✓ All W2 Mean Cell Aver Intens	✓ Negative W3 Mean Stain Area
✓ Positive W2 Mean Stain Area	✓ Negative W3 Mean Stain Integr Intens
✓ Positive W2 Mean Stain Integr Intens	✓ Negative W3 Mean Stain Aver Intens
✓ Positive W2 Mean Stain Aver Intens	✓ Negative W3 Mean Nucl Integr Intens
✓ Positive W2 Mean Nucl Integr Intens	✓ Negative W3 Mean Nucl Aver Intens
✓ Positive W2 Mean Nucl Aver Intens	✓ Negative W3 Mean Cyto Integr Intens
✓ Positive W2 Mean Cyto Integr Intens	✓ Negative W3 Mean Cyto Aver Intens
✓ Positive W2 Mean Cyto Aver Intens	✓ Negative W3 Mean Cell Integr Intens
✓ Positive W2 Mean Cell Integr Intens	✓ Negative W3 Mean Cell Aver Intens
✓ Positive W2 Mean Cell Aver Intens	✓ Positive W3
✓ Negative W2 Mean Stain Area	✓ % Positive W3
✓ Negative W2 Mean Stain Integr Intens	✓ Scoring Profile 1-
✓ Negative W2 Mean Stain Aver Intens	✓ Scoring Profile 12-
✓ Negative W2 Mean Nucl Integr Intens	✓ Scoring Profile 1-3
✓ Negative W2 Mean Nucl Aver Intens	✓ Scoring Profile 123
✓ Negative W2 Mean Cyto Integr Intens	✓ Percentage Scoring Profile 1-
✓ Negative W2 Mean Cyto Aver Intens	✓ Percentage Scoring Profile 12-
✓ Negative W2 Mean Cell Integr Intens	✓ Percentage Scoring Profile 1-3
✓ Negative W2 Mean Cell Aver Intens	✓ Percentage Scoring Profile 123
✓ Positive W2	✓ Subtotal Profile 1xx
✓ % Positive W2	✓ Subtotal Profile 12x
✓ All W3 Mean Stain Area	✓ Subtotal Profile 1x3
✓ All W3 Mean Stain Integr Intens	✓ Subtotal Profile 123
✓ All W3 Mean Stain Aver Intens	✓ Percentage Subtotal Profile 1xx
✓ All W3 Mean Nucl Integr Intens	✓ Percentage Subtotal Profile 12x
✓ All W3 Mean Nucl Aver Intens	✓ Percentage Subtotal Profile 1x3
✓ All W3 Mean Cyto Integr Intens	✓ Percentage Subtotal Profile 123

- **All W2 Mean Stain Area:** The average stained area (nucleus, cytoplasm, or both as defined in the W2 settings) for all cells found in the image (in μm^2)
- **All W2 Mean Stain Integr Intensity:** The total pixel intensity of the W2 stain over the stained area, divided by the total number of cells
- **All W2 Mean Stain Aver Intensity:** The average pixel intensity of the W2 stain over the stained area, over all the cells in the image
- *(similar for W3-W7)*

Summary Data (site-by-site measurements)

✓ Total Cells	✓ All W3 Mean Cyto Integr Intens
✓ All Cells Mean Area	✓ All W3 Mean Cyto Aver Intens
✓ All Nuclei Mean Area	✓ All W3 Mean Cell Integr Intens
✓ All Nuclei Mean Integr Intensity	✓ All W3 Mean Cell Aver Intens
✓ All Nuclei Mean Average Intensity	✓ Positive W3 Mean Stain Area
✓ All W2 Mean Stain Area	✓ Positive W3 Mean Stain Integr Intens
✓ All W2 Mean Stain Integr Intens	✓ Positive W3 Mean Stain Aver Intens
✓ All W2 Mean Stain Aver Intens	✓ Positive W3 Mean Nucl Integr Intens
✓ All W2 Mean Nucl Integr Intens	✓ Positive W3 Mean Nucl Aver Intens
✓ All W2 Mean Nucl Aver Intens	✓ Positive W3 Mean Cyto Integr Intens
✓ All W2 Mean Cyto Integr Intens	✓ Positive W3 Mean Cyto Aver Intens
✓ All W2 Mean Cyto Aver Intens	✓ Positive W3 Mean Cell Integr Intens
✓ All W2 Mean Cell Integr Intens	✓ Positive W3 Mean Cell Aver Intens
✓ All W2 Mean Cell Aver Intens	✓ Negative W3 Mean Stain Area
✓ Positive W2 Mean Stain Area	✓ Negative W3 Mean Stain Integr Intens
✓ Positive W2 Mean Stain Integr Intens	✓ Negative W3 Mean Stain Aver Intens
✓ Positive W2 Mean Stain Aver Intens	✓ Negative W3 Mean Nucl Integr Intens
✓ Positive W2 Mean Nucl Integr Intens	✓ Negative W3 Mean Nucl Aver Intens
✓ Positive W2 Mean Nucl Aver Intens	✓ Negative W3 Mean Cyto Integr Intens
✓ Positive W2 Mean Cyto Integr Intens	✓ Negative W3 Mean Cyto Aver Intens
✓ Positive W2 Mean Cyto Aver Intens	✓ Negative W3 Mean Cell Integr Intens
✓ Positive W2 Mean Cell Integr Intens	✓ Negative W3 Mean Cell Aver Intens
✓ Positive W2 Mean Cell Aver Intens	✓ Positive W3
✓ Negative W2 Mean Stain Area	✓ % Positive W3
✓ Negative W2 Mean Stain Integr Intens	✓ Scoring Profile 1-
✓ Negative W2 Mean Stain Aver Intens	✓ Scoring Profile 12-
✓ Negative W2 Mean Nucl Integr Intens	✓ Scoring Profile 1-3
✓ Negative W2 Mean Nucl Aver Intens	✓ Scoring Profile 123
✓ Negative W2 Mean Cyto Integr Intens	✓ Percentage Scoring Profile 1-
✓ Negative W2 Mean Cyto Aver Intens	✓ Percentage Scoring Profile 12-
✓ Negative W2 Mean Cell Integr Intens	✓ Percentage Scoring Profile 1-3
✓ Negative W2 Mean Cell Aver Intens	✓ Percentage Scoring Profile 123
✓ Positive W2	✓ Subtotal Profile 1xx
✓ % Positive W2	✓ Subtotal Profile 12x
✓ All W3 Mean Stain Area	✓ Subtotal Profile 1x3
✓ All W3 Mean Stain Integr Intens	✓ Subtotal Profile 123
✓ All W3 Mean Stain Aver Intens	✓ Percentage Subtotal Profile 1xx
✓ All W3 Mean Nucl Integr Intens	✓ Percentage Subtotal Profile 12x
✓ All W3 Mean Nucl Aver Intens	✓ Percentage Subtotal Profile 1x3
	✓ Percentage Subtotal Profile 123

- **All W2 Mean Nucl Integr Intensity:**
The total pixel intensity of the W2 stain over the nuclear area, divided by the total number of cells
- **All W2 Mean Nucl Aver Intensity:**
The average pixel intensity of the W2 stain over the nuclear area, over all the cells in the image
- *(similar for W3-W7)*

Summary Data (site-by-site measurements)

✓ Total Cells	✓ All W3 Mean Cyto Integr Intens
✓ All Cells Mean Area	✓ All W3 Mean Cyto Aver Intens
✓ All Nuclei Mean Area	✓ All W3 Mean Cell Integr Intens
✓ All Nuclei Mean Integr Intensity	✓ All W3 Mean Cell Aver Intens
✓ All Nuclei Mean Average Intensity	✓ Positive W3 Mean Stain Area
✓ All W2 Mean Stain Area	✓ Positive W3 Mean Stain Integr Intens
✓ All W2 Mean Stain Integr Intens	✓ Positive W3 Mean Stain Aver Intens
✓ All W2 Mean Stain Aver Intens	✓ Positive W3 Mean Nucl Integr Intens
✓ All W2 Mean Nucl Integr Intens	✓ Positive W3 Mean Nucl Aver Intens
✓ All W2 Mean Nucl Aver Intens	✓ Positive W3 Mean Cyto Integr Intens
✓ All W2 Mean Cyto Integr Intens	✓ Positive W3 Mean Cyto Aver Intens
✓ All W2 Mean Cyto Aver Intens	✓ Positive W3 Mean Cell Integr Intens
✓ All W2 Mean Cell Integr Intens	✓ Positive W3 Mean Cell Aver Intens
✓ All W2 Mean Cell Aver Intens	✓ Negative W3 Mean Stain Area
✓ Positive W2 Mean Stain Area	✓ Negative W3 Mean Stain Integr Intens
✓ Positive W2 Mean Stain Integr Intens	✓ Negative W3 Mean Stain Aver Intens
✓ Positive W2 Mean Stain Aver Intens	✓ Negative W3 Mean Nucl Integr Intens
✓ Positive W2 Mean Nucl Integr Intens	✓ Negative W3 Mean Nucl Aver Intens
✓ Positive W2 Mean Nucl Aver Intens	✓ Negative W3 Mean Cyto Integr Intens
✓ Positive W2 Mean Cyto Integr Intens	✓ Negative W3 Mean Cyto Aver Intens
✓ Positive W2 Mean Cyto Aver Intens	✓ Negative W3 Mean Cell Integr Intens
✓ Positive W2 Mean Cell Integr Intens	✓ Negative W3 Mean Cell Aver Intens
✓ Positive W2 Mean Cell Aver Intens	✓ Positive W3
✓ Negative W2 Mean Stain Area	✓ % Positive W3
✓ Negative W2 Mean Stain Integr Intens	✓ Scoring Profile 1-
✓ Negative W2 Mean Stain Aver Intens	✓ Scoring Profile 12-
✓ Negative W2 Mean Nucl Integr Intens	✓ Scoring Profile 1-3
✓ Negative W2 Mean Nucl Aver Intens	✓ Scoring Profile 123
✓ Negative W2 Mean Cyto Integr Intens	✓ Percentage Scoring Profile 1-
✓ Negative W2 Mean Cyto Aver Intens	✓ Percentage Scoring Profile 12-
✓ Negative W2 Mean Cell Integr Intens	✓ Percentage Scoring Profile 1-3
✓ Negative W2 Mean Cell Aver Intens	✓ Percentage Scoring Profile 123
✓ Positive W2	✓ Subtotal Profile 1xx
✓ % Positive W2	✓ Subtotal Profile 12x
✓ All W3 Mean Stain Area	✓ Subtotal Profile 1x3
✓ All W3 Mean Stain Integr Intens	✓ Subtotal Profile 123
✓ All W3 Mean Stain Aver Intens	✓ Percentage Subtotal Profile 1xx
✓ All W3 Mean Nucl Integr Intens	✓ Percentage Subtotal Profile 12x
✓ All W3 Mean Nucl Aver Intens	✓ Percentage Subtotal Profile 1x3
✓ All W3 Mean Cyto Integr Intens	✓ Percentage Subtotal Profile 123

- **All W2 Mean Cyto Integr Intensity:**
The total pixel intensity of the W2 stain over the cytoplasmic area, divided by the total number of cells
- **All W2 Mean Cyto Aver Intensity:**
The average pixel intensity of the W2 stain over the cytoplasmic area, over all the cells in the image
- *(similar for W3-W7)*

Summary Data (site-by-site measurements)

- ✓ Total Cells
- ✓ All Cells Mean Area
- ✓ All Nuclei Mean Area
- ✓ All Nuclei Mean Integr Intensity
- ✓ All Nuclei Mean Average Intensity
- ✓ All W2 Mean Stain Area
- ✓ All W2 Mean Stain Integr Intens
- ✓ All W2 Mean Stain Aver Intens
- ✓ All W2 Mean Nucl Integr Intens
- ✓ All W2 Mean Nucl Aver Intens
- ✓ All W2 Mean Cyto Integr Intens
- ✓ All W2 Mean Cyto Aver Intens
- ✓ All W2 Mean Cell Integr Intens
- ✓ All W2 Mean Cell Aver Intens
- ✓ Positive W2 Mean Stain Area
- ✓ Positive W2 Mean Stain Integr Inten
- ✓ Positive W2 Mean Stain Aver Intens
- ✓ Positive W2 Mean Nucl Integr Intens
- ✓ Positive W2 Mean Nucl Aver Intens
- ✓ Positive W2 Mean Cyto Integr Intens
- ✓ Positive W2 Mean Cyto Aver Intens
- ✓ Positive W2 Mean Cell Integr Intens
- ✓ Positive W2 Mean Cell Aver Intens
- ✓ Negative W2 Mean Stain Area
- ✓ Negative W2 Mean Stain Integr Inten
- ✓ Negative W2 Mean Stain Aver Inten
- ✓ Negative W2 Mean Nucl Integr Inter
- ✓ Negative W2 Mean Nucl Aver Intens
- ✓ Negative W2 Mean Cyto Integr Inten
- ✓ Negative W2 Mean Cyto Aver Intens
- ✓ Negative W2 Mean Cell Integr Intens
- ✓ Negative W2 Mean Cell Aver Intens
- ✓ Positive W2
- ✓ % Positive W2
- ✓ All W3 Mean Stain Area
- ✓ All W3 Mean Stain Integr Intens
- ✓ All W3 Mean Stain Aver Intens
- ✓ All W3 Mean Nucl Integr Intens
- ✓ All W3 Mean Nucl Aver Inten
- ✓ All W3 Mean Cyto Integr Intens
- ✓ All W3 Mean Cyto Aver Intens
- ✓ All W3 Mean Cell Integr Intens
- ✓ All W3 Mean Cell Aver Intens
- ✓ Positive W3
- ✓ % Positive W3
- ✓ Scoring Profile 1-
- ✓ Scoring Profile 12-
- ✓ Scoring Profile 1-3
- ✓ Scoring Profile 123
- ✓ Percentage Scoring Profile 1-
- ✓ Percentage Scoring Profile 12-
- ✓ Percentage Scoring Profile 1-3
- ✓ Percentage Scoring Profile 123
- ✓ Subtotal Profile 1xx
- ✓ Subtotal Profile 12x
- ✓ Subtotal Profile 1x3
- ✓ Subtotal Profile 123
- ✓ Percentage Subtotal Profile 1xx
- ✓ Percentage Subtotal Profile 12x
- ✓ Percentage Subtotal Profile 1x3
- ✓ Percentage Subtotal Profile 123

- **All W2 Mean Cell Integr Intensity:**
The total pixel intensity of the W2 stain over the cell (nucleus + cytoplasm) area, divided by the total number of cells
- **All W2 Mean Cell Aver Intensity:**
The average pixel intensity of the W2 stain over the cell (nucleus + cytoplasm) area, over all the cells in the image
- *(similar for W3-W7)*

Summary Data (site-by-site measurements)

- ✓ Total Cells
- ✓ All Cells Mean Area
- ✓ All Nuclei Mean Area
- ✓ All Nuclei Mean Integr Intensity
- ✓ All Nuclei Mean Average Intensity
- ✓ All W2 Mean Stain Area
- ✓ All W2 Mean Stain Integr Intens
- ✓ All W2 Mean Stain Aver Intens
- ✓ All W2 Mean Nucl Integr Intens
- ✓ All W2 Mean Nucl Aver Intens
- ✓ All W2 Mean Cyto Integr Intens
- ✓ All W2 Mean Cyto Aver Intens
- ✓ All W2 Mean Cell Integr Intens
- ✓ All W2 Mean Cell Aver Intens
- ✓ Positive W2 Mean Stain Area
- ✓ Positive W2 Mean Stain Integr Intens
- ✓ Positive W2 Mean Stain Aver Intens
- ✓ Positive W2 Mean Nucl Integr Intens
- ✓ Positive W2 Mean Nucl Aver Intens
- ✓ Positive W2 Mean Cyto Integr Intens
- ✓ Positive W2 Mean Cyto Aver Intens
- ✓ Positive W2 Mean Cell Integr Intens
- ✓ Positive W2 Mean Cell Aver Intens
- ✓ Negative W2 Mean Stain Area
- ✓ Negative W2 Mean Stain Integr Intens
- ✓ Negative W2 Mean Stain Aver Intens
- ✓ Negative W2 Mean Nucl Integr Intens
- ✓ Negative W2 Mean Nucl Aver Intens
- ✓ Negative W2 Mean Cyto Integr Intens
- ✓ Negative W2 Mean Cyto Aver Intens
- ✓ Negative W2 Mean Cell Integr Intens
- ✓ Negative W2 Mean Cell Aver Intens
- ✓ Positive W2
- ✓ % Positive W2
- ✓ All W3 Mean Stain Area
- ✓ All W3 Mean Stain Integr Intens
- ✓ All W3 Mean Stain Aver Intens
- ✓ All W3 Mean Nucl Integr Intens
- ✓ All W3 Mean Nucl Aver Intens
- ✓ All W3 Mean Cyto Integr Intens
- ✓ All W3 Mean Cyto Aver Intens
- ✓ All W3 Mean Cell Integr Intens
- ✓ All W3 Mean Cell Aver Intens
- ✓ Negative W3 Mean Stain Area
- ✓ Negative W3 Mean Stain Integr Intens
- ✓ Negative W3 Mean Stain Aver Intens
- ✓ Negative W3 Mean Nucl Integr Intens
- ✓ Negative W3 Mean Nucl Aver Intens
- ✓ Negative W3 Mean Cyto Integr Intens
- ✓ Negative W3 Mean Cyto Aver Intens
- ✓ Negative W3 Mean Cell Integr Intens
- ✓ Negative W3 Mean Cell Aver Intens
- ✓ Positive W3
- ✓ % Positive W3
- ✓ Scoring Profile 1-
- ✓ Scoring Profile 12-
- ✓ Scoring Profile 1-3
- ✓ Scoring Profile 123
- ✓ Percentage Scoring Profile 1-
- ✓ Percentage Scoring Profile 12-
- ✓ Percentage Scoring Profile 1-3
- ✓ Percentage Scoring Profile 123
- ✓ Subtotal Profile 1xx
- ✓ Subtotal Profile 12x
- ✓ Subtotal Profile 1x3
- ✓ Subtotal Profile 123
- ✓ Percentage Subtotal Profile 1xx
- ✓ Percentage Subtotal Profile 12x
- ✓ Percentage Subtotal Profile 1x3
- ✓ Percentage Subtotal Profile 123

- **Positive W2 Mean Stain Area:** The average stained area (nucleus, cytoplasm, or both as defined in the W2 settings) for all cells scored as positive for W2 (in μm^2)
- **Positive W2 Mean Stain Integr Intensity:** The total pixel intensity of the W2 stain over the stained area in W2 positive cells, divided by the number of cells positive for W2
- **Positive W2 Mean Stain Aver Intensity:** The average pixel intensity of the W2 stain over the stained area in W2 positive cells
- *(similar for W3-W7)*

Summary Data (site-by-site measurements)

✓ Total Cells	✓ All W3 Mean Cyto Integr Intens
✓ All Cells Mean Area	✓ All W3 Mean Cyto Aver Intens
✓ All Nuclei Mean Area	✓ All W3 Mean Cell Integr Intens
✓ All Nuclei Mean Integr Intensity	✓ All W3 Mean Cell Aver Intens
✓ All Nuclei Mean Average Intensity	✓ Positive W3 Mean Stain Area
✓ All W2 Mean Stain Area	✓ Positive W3 Mean Stain Integr Intens
✓ All W2 Mean Stain Integr Intens	✓ Positive W3 Mean Stain Aver Intens
✓ All W2 Mean Stain Aver Intens	✓ Positive W3 Mean Nucl Integr Intens
✓ All W2 Mean Nucl Integr Intens	✓ Positive W3 Mean Nucl Aver Intens
✓ All W2 Mean Nucl Aver Intens	✓ Positive W3 Mean Cyto Integr Intens
✓ All W2 Mean Cyto Integr Intens	✓ Positive W3 Mean Cyto Aver Intens
✓ All W2 Mean Cyto Aver Intens	✓ Positive W3 Mean Cell Integr Intens
✓ All W2 Mean Cell Integr Intens	✓ Positive W3 Mean Cell Aver Intens
✓ All W2 Mean Cell Aver Intens	✓ Negative W3 Mean Stain Area
✓ Positive W2 Mean Stain Area	✓ Negative W3 Mean Stain Integr Intens
✓ Positive W2 Mean Stain Integr Intens	✓ Negative W3 Mean Stain Aver Intens
✓ Positive W2 Mean Stain Aver Intens	✓ Negative W3 Mean Nucl Integr Intens
✓ Positive W2 Mean Nucl Integr Intens	✓ Negative W3 Mean Nucl Aver Intens
✓ Positive W2 Mean Nucl Aver Intens	✓ Negative W3 Mean Cyto Integr Intens
✓ Positive W2 Mean Cyto Integr Intens	✓ Negative W3 Mean Cyto Aver Intens
✓ Positive W2 Mean Cyto Aver Intens	✓ Negative W3 Mean Cell Integr Intens
✓ Positive W2 Mean Cell Integr Intens	✓ Negative W3 Mean Cell Aver Intens
✓ Positive W2 Mean Cell Aver Intens	✓ Positive W3
✓ Negative W2 Mean Stain Area	✓ % Positive W3
✓ Negative W2 Mean Stain Integr Intens	✓ Scoring Profile 1-
✓ Negative W2 Mean Stain Aver Intens	✓ Scoring Profile 12-
✓ Negative W2 Mean Nucl Integr Intens	✓ Scoring Profile 1-3
✓ Negative W2 Mean Nucl Aver Intens	✓ Scoring Profile 123
✓ Negative W2 Mean Cyto Integr Intens	✓ Percentage Scoring Profile 1-
✓ Negative W2 Mean Cyto Aver Intens	✓ Percentage Scoring Profile 12-
✓ Negative W2 Mean Cell Integr Intens	✓ Percentage Scoring Profile 1-3
✓ Negative W2 Mean Cell Aver Intens	✓ Percentage Scoring Profile 123
✓ Positive W2	✓ Subtotal Profile 1xx
✓ % Positive W2	✓ Subtotal Profile 12x
✓ All W3 Mean Stain Area	✓ Subtotal Profile 1x3
✓ All W3 Mean Stain Integr Intens	✓ Subtotal Profile 123
✓ All W3 Mean Stain Aver Intens	✓ Percentage Subtotal Profile 1xx
✓ All W3 Mean Nucl Integr Intens	✓ Percentage Subtotal Profile 12x
✓ All W3 Mean Nucl Aver Intens	✓ Percentage Subtotal Profile 1x3
✓ All W3 Mean Cyto Integr Intens	✓ Percentage Subtotal Profile 123

- **Positive W2 Mean Nucl Integr Intensity:** The total pixel intensity of the W2 stain over the nuclear area in W2 positive cells, divided by the number of cells positive for W2
- **Positive W2 Mean Nucl Aver Intensity:** The average pixel intensity of the W2 stain over the nuclear area in W2 positive cells
- *(similar for W3-W7)*

Summary Data (site-by-site measurements)

- ✓ Total Cells
- ✓ All Cells Mean Area
- ✓ All Nuclei Mean Area
- ✓ All Nuclei Mean Integr Intensity
- ✓ All Nuclei Mean Average Intensity
- ✓ All W2 Mean Stain Area
- ✓ All W2 Mean Stain Integr Intens
- ✓ All W2 Mean Stain Aver Intens
- ✓ All W2 Mean Nucl Integr Intens
- ✓ All W2 Mean Nucl Aver Intens
- ✓ All W2 Mean Cyto Integr Intens
- ✓ All W2 Mean Cyto Aver Intens
- ✓ All W2 Mean Cell Integr Intens
- ✓ All W2 Mean Cell Aver Intens
- ✓ Positive W2 Mean Stain Area
- ✓ Positive W2 Mean Stain Integr Inten
- ✓ Positive W2 Mean Stain Aver Intens
- ✓ Positive W2 Mean Nucl Integr Intens
- ✓ Positive W2 Mean Nucl Aver Intens
- ✓ Positive W2 Mean Cyto Integr Intens
- ✓ Positive W2 Mean Cyto Aver Intens
- ✓ Positive W2 Mean Cell Integr Intens
- ✓ Positive W2 Mean Cell Aver Intens
- ✓ Negative W2 Mean Stain Area
- ✓ Negative W2 Mean Stain Integr Inten
- ✓ Negative W2 Mean Stain Aver Inten
- ✓ Negative W2 Mean Nucl Integr Inter
- ✓ Negative W2 Mean Nucl Aver Intens
- ✓ Negative W2 Mean Cyto Integr Inten
- ✓ Negative W2 Mean Cyto Aver Intens
- ✓ Negative W2 Mean Cell Integr Intens
- ✓ Negative W2 Mean Cell Aver Intens
- ✓ Positive W2
- ✓ % Positive W2
- ✓ All W3 Mean Stain Area
- ✓ All W3 Mean Stain Integr Intens
- ✓ All W3 Mean Stain Aver Intens
- ✓ All W3 Mean Nucl Integr Intens
- ✓ All W3 Mean Nucl Aver Inten
- ✓ All W3 Mean Cyto Integr Intens
- ✓ All W3 Mean Cyto Aver Intens
- ✓ All W3 Mean Cell Integr Intens
- ✓ All W3 Mean Cell Aver Intens
- ✓ Negative W3 Mean Stain Area
- ✓ Negative W3 Mean Stain Integr Intens
- ✓ Negative W3 Mean Stain Aver Intens
- ✓ Negative W3 Mean Nucl Integr Intens
- ✓ Negative W3 Mean Nucl Aver Intens
- ✓ Negative W3 Mean Cyto Integr Intens
- ✓ Negative W3 Mean Cyto Aver Intens
- ✓ Negative W3 Mean Cell Integr Intens
- ✓ Negative W3 Mean Cell Aver Intens
- ✓ Positive W3
- ✓ % Positive W3
- ✓ Scoring Profile 1-
- ✓ Scoring Profile 12-
- ✓ Scoring Profile 1-3
- ✓ Scoring Profile 123
- ✓ Percentage Scoring Profile 1-
- ✓ Percentage Scoring Profile 12-
- ✓ Percentage Scoring Profile 1-3
- ✓ Percentage Scoring Profile 123
- ✓ Subtotal Profile 1xx
- ✓ Subtotal Profile 12x
- ✓ Subtotal Profile 1x3
- ✓ Subtotal Profile 123
- ✓ Percentage Subtotal Profile 1xx
- ✓ Percentage Subtotal Profile 12x
- ✓ Percentage Subtotal Profile 1x3
- ✓ Percentage Subtotal Profile 123

- **Positive W2 Mean Cyto Integr Intensity:** The total pixel intensity of the W2 stain over the cytoplasmic area in W2 positive cells, divided by the number of cells positive for W2
- **Positive W2 Mean Cyto Aver Intensity:** The average pixel intensity of the W2 stain over the cytoplasmic area in W2 positive cells
- *(similar for W3-W7)*

Summary Data (site-by-site measurements)

✓ Total Cells	✓ All W3 Mean Cyto Integr Intens
✓ All Cells Mean Area	✓ All W3 Mean Cyto Aver Intens
✓ All Nuclei Mean Area	✓ All W3 Mean Cell Integr Intens
✓ All Nuclei Mean Integr Intensity	✓ All W3 Mean Cell Aver Intens
✓ All Nuclei Mean Average Intensity	✓ Positive W3 Mean Stain Area
✓ All W2 Mean Stain Area	✓ Positive W3 Mean Stain Integr Intens
✓ All W2 Mean Stain Integr Intens	✓ Positive W3 Mean Stain Aver Intens
✓ All W2 Mean Stain Aver Intens	✓ Positive W3 Mean Nucl Integr Intens
✓ All W2 Mean Nucl Integr Intens	✓ Positive W3 Mean Nucl Aver Intens
✓ All W2 Mean Nucl Aver Intens	✓ Positive W3 Mean Cyto Integr Intens
✓ All W2 Mean Cyto Integr Intens	✓ Positive W3 Mean Cyto Aver Intens
✓ All W2 Mean Cyto Aver Intens	✓ Positive W3 Mean Cell Integr Intens
✓ All W2 Mean Cell Integr Intens	✓ Positive W3 Mean Cell Aver Intens
✓ All W2 Mean Cell Aver Intens	✓ Negative W3 Mean Stain Area
✓ Positive W2 Mean Stain Area	✓ Negative W3 Mean Stain Integr Intens
✓ Positive W2 Mean Stain Integr Intens	✓ Negative W3 Mean Stain Aver Intens
✓ Positive W2 Mean Stain Aver Intens	✓ Negative W3 Mean Nucl Integr Intens
✓ Positive W2 Mean Nucl Integr Intens	✓ Negative W3 Mean Nucl Aver Intens
✓ Positive W2 Mean Nucl Aver Intens	✓ Negative W3 Mean Cyto Integr Intens
✓ Positive W2 Mean Cyto Integr Intens	✓ Negative W3 Mean Cyto Aver Intens
✓ Positive W2 Mean Cyto Aver Intens	✓ Negative W3 Mean Cell Integr Intens
✓ Positive W2 Mean Cell Integr Intens	✓ Negative W3 Mean Cell Aver Intens
✓ Positive W2 Mean Cell Aver Intens	✓ Positive W3
✓ Positive W2 Mean Cell Integr Intens	✓ % Positive W3
✓ Positive W2 Mean Cell Aver Intens	✓ Scoring Profile 1-
✓ Negative W2 Mean Stain Area	✓ Scoring Profile 12-
✓ Negative W2 Mean Stain Integr Intens	✓ Scoring Profile 1-3
✓ Negative W2 Mean Stain Aver Intens	✓ Scoring Profile 123
✓ Negative W2 Mean Nucl Integr Intens	✓ Percentage Scoring Profile 1-
✓ Negative W2 Mean Nucl Aver Intens	✓ Percentage Scoring Profile 12-
✓ Negative W2 Mean Cyto Integr Intens	✓ Percentage Scoring Profile 1-3
✓ Negative W2 Mean Cyto Aver Intens	✓ Percentage Scoring Profile 123
✓ Negative W2 Mean Cell Integr Intens	✓ Subtotal Profile 1xx
✓ Negative W2 Mean Cell Aver Intens	✓ Subtotal Profile 12x
✓ Positive W2	✓ Subtotal Profile 1x3
✓ % Positive W2	✓ Subtotal Profile 123
✓ All W3 Mean Stain Area	✓ Percentage Subtotal Profile 1xx
✓ All W3 Mean Stain Integr Intens	✓ Percentage Subtotal Profile 12x
✓ All W3 Mean Stain Aver Intens	✓ Percentage Subtotal Profile 1x3
✓ All W3 Mean Nucl Integr Intens	✓ Percentage Subtotal Profile 123
✓ All W3 Mean Nucl Aver Intens	✓ Percentage Subtotal Profile 123

- **Positive W2 Mean Cell Integr Intensity:** The total pixel intensity of the W2 stain over the cell (nucleus + cytoplasm) area in W2 positive cells, divided by the number of cells positive for W2
- **Positive W2 Mean Cell Aver Intensity:** The average pixel intensity of the W2 stain over the cell (nucleus + cytoplasm) area in W2 positive cells
- *(similar for W3-W7)*

Summary Data (site-by-site measurements)

✓ Total Cells	✓ All W3 Mean Cyto Integr Intens
✓ All Cells Mean Area	✓ All W3 Mean Cyto Aver Intens
✓ All Nuclei Mean Area	✓ All W3 Mean Cell Integr Intens
✓ All Nuclei Mean Integr Intensity	✓ All W3 Mean Cell Aver Intens
✓ All Nuclei Mean Average Intensity	✓ Positive W3 Mean Stain Area
✓ All W2 Mean Stain Area	✓ Positive W3 Mean Stain Integr Intens
✓ All W2 Mean Stain Integr Intens	✓ Positive W3 Mean Stain Aver Intens
✓ All W2 Mean Stain Aver Intens	✓ Positive W3 Mean Nucl Integr Intens
✓ All W2 Mean Nucl Integr Intens	✓ Positive W3 Mean Nucl Aver Intens
✓ All W2 Mean Nucl Aver Intens	✓ Positive W3 Mean Cyto Integr Intens
✓ All W2 Mean Cyto Integr Intens	✓ Positive W3 Mean Cyto Aver Intens
✓ All W2 Mean Cyto Aver Intens	✓ Positive W3 Mean Cell Integr Intens
✓ All W2 Mean Cell Integr Intens	✓ Positive W3 Mean Cell Aver Intens
✓ All W2 Mean Cell Aver Intens	✓ Negative W3 Mean Stain Area
✓ Positive W2 Mean Stain Area	✓ Negative W3 Mean Stain Integr Intens
✓ Positive W2 Mean Stain Integr Intens	✓ Negative W3 Mean Stain Aver Intens
✓ Positive W2 Mean Stain Aver Intens	✓ Negative W3 Mean Nucl Integr Intens
✓ Positive W2 Mean Nucl Integr Intens	✓ Negative W3 Mean Nucl Aver Intens
✓ Positive W2 Mean Nucl Aver Intens	✓ Negative W3 Mean Cyto Integr Intens
✓ Positive W2 Mean Cyto Integr Intens	✓ Negative W3 Mean Cyto Aver Intens
✓ Positive W2 Mean Cyto Aver Intens	✓ Negative W3 Mean Cell Integr Intens
✓ Positive W2 Mean Cell Integr Intens	✓ Negative W3 Mean Cell Aver Intens
✓ Positive W2 Mean Cell Aver Intens	✓ Positive W3
✓ Negative W2 Mean Stain Area	✓ % Positive W3
✓ Negative W2 Mean Stain Integr Intens	✓ Scoring Profile 1-
✓ Negative W2 Mean Stain Aver Intens	✓ Scoring Profile 12-
✓ Negative W2 Mean Nucl Integr Intens	✓ Scoring Profile 1-3
✓ Negative W2 Mean Nucl Aver Intens	✓ Scoring Profile 123
✓ Negative W2 Mean Cyto Integr Intens	✓ Percentage Scoring Profile 1-
✓ Negative W2 Mean Cyto Aver Intens	✓ Percentage Scoring Profile 12-
✓ Negative W2 Mean Cell Integr Intens	✓ Percentage Scoring Profile 1-3
✓ Negative W2 Mean Cell Aver Intens	✓ Percentage Scoring Profile 123
✓ Positive W2	✓ Subtotal Profile 1xx
✓ % Positive W2	✓ Subtotal Profile 12x
✓ All W3 Mean Stain Area	✓ Subtotal Profile 1x3
✓ All W3 Mean Stain Integr Intens	✓ Subtotal Profile 123
✓ All W3 Mean Stain Aver Intens	✓ Percentage Subtotal Profile 1xx
✓ All W3 Mean Nucl Integr Intens	✓ Percentage Subtotal Profile 12x
✓ All W3 Mean Nucl Aver Intens	✓ Percentage Subtotal Profile 1x3
✓ All W3 Mean Cyto Integr Intens	✓ Percentage Subtotal Profile 123

- **Negative W2 Mean Stain Area:** The average stained area (nucleus, cytoplasm, or both as defined in the W2 settings) for all cells scored as negative for W2 (in μm^2)
- **Negative W2 Mean Stain Integr Intensity:** The total pixel intensity of the W2 stain over the stained area in W2 negative cells, divided by the number of cells negative for W2
- **Negative W2 Mean Stain Aver Intensity:** The average pixel intensity of the W2 stain over the stained area in W2 negative cells
- *(similar for W3-W7)*

Summary Data (site-by-site measurements)

✓ Total Cells	✓ All W3 Mean Cyto Integr Intens
✓ All Cells Mean Area	✓ All W3 Mean Cyto Aver Intens
✓ All Nuclei Mean Area	✓ All W3 Mean Cell Integr Intens
✓ All Nuclei Mean Integr Intensity	✓ All W3 Mean Cell Aver Intens
✓ All Nuclei Mean Average Intensity	✓ Positive W3 Mean Stain Area
✓ All W2 Mean Stain Area	✓ Positive W3 Mean Stain Integr Intens
✓ All W2 Mean Stain Integr Intens	✓ Positive W3 Mean Stain Aver Intens
✓ All W2 Mean Stain Aver Intens	✓ Positive W3 Mean Nucl Integr Intens
✓ All W2 Mean Nucl Integr Intens	✓ Positive W3 Mean Nucl Aver Intens
✓ All W2 Mean Nucl Aver Intens	✓ Positive W3 Mean Cyto Integr Intens
✓ All W2 Mean Cyto Integr Intens	✓ Positive W3 Mean Cyto Aver Intens
✓ All W2 Mean Cyto Aver Intens	✓ Positive W3 Mean Cell Integr Intens
✓ All W2 Mean Cell Integr Intens	✓ Positive W3 Mean Cell Aver Intens
✓ All W2 Mean Cell Aver Intens	✓ Negative W3 Mean Stain Area
✓ Positive W2 Mean Stain Area	✓ Negative W3 Mean Stain Integr Intens
✓ Positive W2 Mean Stain Integr Intens	✓ Negative W3 Mean Stain Aver Intens
✓ Positive W2 Mean Stain Aver Intens	✓ Negative W3 Mean Nucl Integr Intens
✓ Positive W2 Mean Nucl Integr Intens	✓ Negative W3 Mean Nucl Aver Intens
✓ Positive W2 Mean Nucl Aver Intens	✓ Negative W3 Mean Cyto Integr Intens
✓ Positive W2 Mean Cyto Integr Intens	✓ Negative W3 Mean Cyto Aver Intens
✓ Positive W2 Mean Cyto Aver Intens	✓ Negative W3 Mean Cell Integr Intens
✓ Positive W2 Mean Cell Integr Intens	✓ Negative W3 Mean Cell Aver Intens
✓ Positive W2 Mean Cell Aver Intens	✓ Positive W3
✓ Negative W2 Mean Stain Area	✓ % Positive W3
✓ Negative W2 Mean Stain Integr Intens	✓ Scoring Profile 1-
✓ Negative W2 Mean Stain Aver Intens	✓ Scoring Profile 12-
✓ Negative W2 Mean Nucl Integr Intens	✓ Scoring Profile 1-3
✓ Negative W2 Mean Nucl Aver Intens	✓ Scoring Profile 123
✓ Negative W2 Mean Cyto Integr Intens	✓ Percentage Scoring Profile 1-
✓ Negative W2 Mean Cyto Aver Intens	✓ Percentage Scoring Profile 12-
✓ Negative W2 Mean Cell Integr Intens	✓ Percentage Scoring Profile 1-3
✓ Negative W2 Mean Cell Aver Intens	✓ Percentage Scoring Profile 123
✓ Positive W2	✓ Subtotal Profile 1xx
✓ % Positive W2	✓ Subtotal Profile 12x
✓ All W3 Mean Stain Area	✓ Subtotal Profile 1x3
✓ All W3 Mean Stain Integr Intens	✓ Subtotal Profile 123
✓ All W3 Mean Stain Aver Intens	✓ Percentage Subtotal Profile 1xx
✓ All W3 Mean Nucl Integr Intens	✓ Percentage Subtotal Profile 12x
✓ All W3 Mean Nucl Aver Intens	✓ Percentage Subtotal Profile 1x3
✓ All W3 Mean Cyto Integr Intens	✓ Percentage Subtotal Profile 123

- **Negative W2 Mean Nucl Integr Intensity:** The total pixel intensity of the W2 stain over the nuclear area in W2 negative cells, divided by the number of cells negative for W2
- **Negative W2 Mean Nucl Aver Intensity:** The average pixel intensity of the W2 stain over the nuclear area in W2 negative cells
- *(similar for W3-W7)*

Summary Data (site-by-site measurements)

✓ Total Cells	✓ All W3 Mean Cyto Integr Intens
✓ All Cells Mean Area	✓ All W3 Mean Cyto Aver Intens
✓ All Nuclei Mean Area	✓ All W3 Mean Cell Integr Intens
✓ All Nuclei Mean Integr Intensity	✓ All W3 Mean Cell Aver Intens
✓ All Nuclei Mean Average Intensity	✓ Positive W3 Mean Stain Area
✓ All W2 Mean Stain Area	✓ Positive W3 Mean Stain Integr Intens
✓ All W2 Mean Stain Integr Intens	✓ Positive W3 Mean Stain Aver Intens
✓ All W2 Mean Stain Aver Intens	✓ Positive W3 Mean Nucl Integr Intens
✓ All W2 Mean Nucl Integr Intens	✓ Positive W3 Mean Nucl Aver Intens
✓ All W2 Mean Nucl Aver Intens	✓ Positive W3 Mean Cyto Integr Intens
✓ All W2 Mean Cyto Integr Intens	✓ Positive W3 Mean Cyto Aver Intens
✓ All W2 Mean Cyto Aver Intens	✓ Positive W3 Mean Cell Integr Intens
✓ All W2 Mean Cell Integr Intens	✓ Positive W3 Mean Cell Aver Intens
✓ All W2 Mean Cell Aver Intens	✓ Negative W3 Mean Stain Area
✓ Positive W2 Mean Stain Area	✓ Negative W3 Mean Stain Integr Intens
✓ Positive W2 Mean Stain Integr Intens	✓ Negative W3 Mean Stain Aver Intens
✓ Positive W2 Mean Stain Aver Intens	✓ Negative W3 Mean Nucl Integr Intens
✓ Positive W2 Mean Nucl Integr Intens	✓ Negative W3 Mean Nucl Aver Intens
✓ Positive W2 Mean Nucl Aver Intens	✓ Negative W3 Mean Cyto Integr Intens
✓ Positive W2 Mean Cyto Integr Intens	✓ Negative W3 Mean Cyto Aver Intens
✓ Positive W2 Mean Cyto Aver Intens	✓ Negative W3 Mean Cell Integr Intens
✓ Positive W2 Mean Cell Integr Intens	✓ Negative W3 Mean Cell Aver Intens
✓ Positive W2 Mean Cell Aver Intens	✓ Positive W3
✓ Negative W2 Mean Stain Area	✓ % Positive W3
✓ Negative W2 Mean Stain Integr Intens	✓ Scoring Profile 1-
✓ Negative W2 Mean Stain Aver Intens	✓ Scoring Profile 12-
✓ Negative W2 Mean Nucl Integr Intens	✓ Scoring Profile 1-3
✓ Negative W2 Mean Nucl Aver Intens	✓ Scoring Profile 123
✓ Negative W2 Mean Cyto Integr Intens	✓ Percentage Scoring Profile 1-
✓ Negative W2 Mean Cyto Aver Intens	✓ Percentage Scoring Profile 12-
✓ Negative W2 Mean Cell Integr Intens	✓ Percentage Scoring Profile 1-3
✓ Negative W2 Mean Cell Aver Intens	✓ Percentage Scoring Profile 123
✓ Positive W2	✓ Subtotal Profile 1xx
✓ % Positive W2	✓ Subtotal Profile 12x
✓ All W3 Mean Stain Area	✓ Subtotal Profile 1x3
✓ All W3 Mean Stain Integr Intens	✓ Subtotal Profile 123
✓ All W3 Mean Stain Aver Intens	✓ Percentage Subtotal Profile 1xx
✓ All W3 Mean Nucl Integr Intens	✓ Percentage Subtotal Profile 12x
✓ All W3 Mean Nucl Aver Intens	✓ Percentage Subtotal Profile 1x3
✓ All W3 Mean Cyto Integr Intens	✓ Percentage Subtotal Profile 123

- **Negative W2 Mean Cyto Integr Intensity:** The total pixel intensity of the W2 stain over the cytoplasmic area in W2 negative cells, divided by the number of cells negative for W2
- **Negative W2 Mean Cyto Aver Intensity:** The average pixel intensity of the W2 stain over the cytoplasmic area in W2 negative cells
- *(similar for W3-W7)*

Summary Data (site-by-site measurements)

✓ Total Cells	✓ All W3 Mean Cyto Integr Intens
✓ All Cells Mean Area	✓ All W3 Mean Cyto Aver Intens
✓ All Nuclei Mean Area	✓ All W3 Mean Cell Integr Intens
✓ All Nuclei Mean Integr Intensity	✓ All W3 Mean Cell Aver Intens
✓ All Nuclei Mean Average Intensity	✓ Positive W3 Mean Stain Area
✓ All W2 Mean Stain Area	✓ Positive W3 Mean Stain Integr Intens
✓ All W2 Mean Stain Integr Intens	✓ Positive W3 Mean Stain Aver Intens
✓ All W2 Mean Stain Aver Intens	✓ Positive W3 Mean Nucl Integr Intens
✓ All W2 Mean Nucl Integr Intens	✓ Positive W3 Mean Nucl Aver Intens
✓ All W2 Mean Nucl Aver Intens	✓ Positive W3 Mean Cyto Integr Intens
✓ All W2 Mean Cyto Integr Intens	✓ Positive W3 Mean Cyto Aver Intens
✓ All W2 Mean Cyto Aver Intens	✓ Positive W3 Mean Cell Integr Intens
✓ All W2 Mean Cell Integr Intens	✓ Positive W3 Mean Cell Aver Intens
✓ All W2 Mean Cell Aver Intens	✓ Negative W3 Mean Stain Area
✓ Positive W2 Mean Stain Area	✓ Negative W3 Mean Stain Integr Intens
✓ Positive W2 Mean Stain Integr Intens	✓ Negative W3 Mean Stain Aver Intens
✓ Positive W2 Mean Stain Aver Intens	✓ Negative W3 Mean Nucl Integr Intens
✓ Positive W2 Mean Nucl Integr Intens	✓ Negative W3 Mean Nucl Aver Intens
✓ Positive W2 Mean Nucl Aver Intens	✓ Negative W3 Mean Cyto Integr Intens
✓ Positive W2 Mean Cyto Integr Intens	✓ Negative W3 Mean Cyto Aver Intens
✓ Positive W2 Mean Cyto Aver Intens	✓ Negative W3 Mean Cell Integr Intens
✓ Positive W2 Mean Cell Integr Intens	✓ Negative W3 Mean Cell Aver Intens
✓ Positive W2 Mean Cell Aver Intens	✓ Positive W3
✓ Negative W2 Mean Stain Area	✓ % Positive W3
✓ Negative W2 Mean Stain Integr Intens	✓ Scoring Profile 1-
✓ Negative W2 Mean Stain Aver Intens	✓ Scoring Profile 12-
✓ Negative W2 Mean Nucl Integr Intens	✓ Scoring Profile 1-3
✓ Negative W2 Mean Nucl Aver Intens	✓ Scoring Profile 123
✓ Negative W2 Mean Cyto Integr Intens	✓ Percentage Scoring Profile 1-
✓ Negative W2 Mean Cyto Aver Intens	✓ Percentage Scoring Profile 12-
✓ Negative W2 Mean Cell Integr Intens	✓ Percentage Scoring Profile 1-3
✓ Negative W2 Mean Cell Aver Intens	✓ Percentage Scoring Profile 123
✓ Positive W2	✓ Subtotal Profile 1xx
✓ % Positive W2	✓ Subtotal Profile 12x
✓ All W3 Mean Stain Area	✓ Subtotal Profile 1x3
✓ All W3 Mean Stain Integr Intens	✓ Subtotal Profile 123
✓ All W3 Mean Stain Aver Intens	✓ Percentage Subtotal Profile 1xx
✓ All W3 Mean Nucl Integr Intens	✓ Percentage Subtotal Profile 12x
✓ All W3 Mean Nucl Aver Intens	✓ Percentage Subtotal Profile 1x3
✓ All W3 Mean Cyto Integr Intens	✓ Percentage Subtotal Profile 123

- **Negative W2 Mean Cell Integr Intensity:** The total pixel intensity of the W2 stain over the cell (nucleus + cytoplasm) area in W2 negative cells, divided by the number of cells negative for W2
- **Negative W2 Mean Cell Aver Intensity:** The average pixel intensity of the W2 stain over the cell (nucleus + cytoplasm) area in W2 negative cells
- *(similar for W3-W7)*

Summary Data (site-by-site measurements)

✓ Total Cells	✓ All W3 Mean Cyto Integr Intens
✓ All Cells Mean Area	✓ All W3 Mean Cyto Aver Intens
✓ All Nuclei Mean Area	✓ All W3 Mean Cell Integr Intens
✓ All Nuclei Mean Integr Intensity	✓ All W3 Mean Cell Aver Intens
✓ All Nuclei Mean Average Intensity	✓ Positive W3 Mean Stain Area
✓ All W2 Mean Stain Area	✓ Positive W3 Mean Stain Integr Intens
✓ All W2 Mean Stain Integr Intens	✓ Positive W3 Mean Stain Aver Intens
✓ All W2 Mean Stain Aver Intens	✓ Positive W3 Mean Nucl Integr Intens
✓ All W2 Mean Nucl Integr Intens	✓ Positive W3 Mean Nucl Aver Intens
✓ All W2 Mean Nucl Aver Intens	✓ Positive W3 Mean Cyto Integr Intens
✓ All W2 Mean Cyto Integr Intens	✓ Positive W3 Mean Cyto Aver Intens
✓ All W2 Mean Cyto Aver Intens	✓ Positive W3 Mean Cell Integr Intens
✓ All W2 Mean Cell Integr Intens	✓ Positive W3 Mean Cell Aver Intens
✓ All W2 Mean Cell Aver Intens	✓ Negative W3 Mean Stain Area
✓ Positive W2 Mean Stain Area	✓ Negative W3 Mean Stain Integr Intens
✓ Positive W2 Mean Stain Integr Intens	✓ Negative W3 Mean Stain Aver Intens
✓ Positive W2 Mean Stain Aver Intens	✓ Negative W3 Mean Nucl Integr Intens
✓ Positive W2 Mean Nucl Integr Intens	✓ Negative W3 Mean Nucl Aver Intens
✓ Positive W2 Mean Nucl Aver Intens	✓ Negative W3 Mean Cyto Integr Intens
✓ Positive W2 Mean Cyto Integr Intens	✓ Negative W3 Mean Cyto Aver Intens
✓ Positive W2 Mean Cyto Aver Intens	✓ Negative W3 Mean Cell Integr Intens
✓ Positive W2 Mean Cell Integr Intens	✓ Negative W3 Mean Cell Aver Intens
✓ Positive W2 Mean Cell Aver Intens	✓ Positive W3
✓ Negative W2 Mean Stain Area	✓ % Positive W3
✓ Negative W2 Mean Stain Integr Intens	✓ Scoring Profile 1-
✓ Negative W2 Mean Stain Aver Intens	✓ Scoring Profile 12-
✓ Negative W2 Mean Nucl Integr Intens	✓ Scoring Profile 1-3
✓ Negative W2 Mean Nucl Aver Intens	✓ Scoring Profile 123
✓ Negative W2 Mean Cyto Integr Intens	✓ Percentage Scoring Profile 1-
✓ Negative W2 Mean Cyto Aver Intens	✓ Percentage Scoring Profile 12-
✓ Negative W2 Mean Cell Integr Intens	✓ Percentage Scoring Profile 1-3
✓ Negative W2 Mean Cell Aver Intens	✓ Percentage Scoring Profile 123
✓ Positive W2	✓ Subtotal Profile 1xx
✓ % Positive W2	✓ Subtotal Profile 12x
✓ All W3 Mean Stain Area	✓ Subtotal Profile 1x3
✓ All W3 Mean Stain Integr Intens	✓ Subtotal Profile 123
✓ All W3 Mean Stain Aver Intens	✓ Percentage Subtotal Profile 1xx
✓ All W3 Mean Nucl Integr Intens	✓ Percentage Subtotal Profile 12x
✓ All W3 Mean Nucl Aver Intens	✓ Percentage Subtotal Profile 1x3
✓ All W3 Mean Cyto Integr Intens	✓ Percentage Subtotal Profile 123

- **Positive W2:** The total number of cells positive for staining with wavelength 2 as defined in the settings
- **% Positive W2:** The number of positive W2 cells divided by the total number of cells, times 100
- *(similar for W3-W7)*

Summary Data (site-by-site measurements)

✓ Total Cells	✓ All W3 Mean Cyto Integr Intens
✓ All Cells Mean Area	✓ All W3 Mean Cyto Aver Intens
✓ All Nuclei Mean Area	✓ All W3 Mean Cell Integr Intens
✓ All Nuclei Mean Integr Intensity	✓ All W3 Mean Cell Aver Intens
✓ All Nuclei Mean Average Intensity	✓ Positive W3 Mean Stain Area
✓ All W2 Mean Stain Area	✓ Positive W3 Mean Stain Integr Intens
✓ All W2 Mean Stain Integr Intens	✓ Positive W3 Mean Stain Aver Intens
✓ All W2 Mean Stain Aver Intens	✓ Positive W3 Mean Nucl Integr Intens
✓ All W2 Mean Nucl Integr Intens	✓ Positive W3 Mean Nucl Aver Intens
✓ All W2 Mean Nucl Aver Intens	✓ Positive W3 Mean Cyto Integr Intens
✓ All W2 Mean Cyto Integr Intens	✓ Positive W3 Mean Cyto Aver Intens
✓ All W2 Mean Cyto Aver Intens	✓ Positive W3 Mean Cell Integr Intens
✓ All W2 Mean Cell Integr Intens	✓ Positive W3 Mean Cell Aver Intens
✓ All W2 Mean Cell Aver Intens	✓ Negative W3 Mean Stain Area
✓ Positive W2 Mean Stain Area	✓ Negative W3 Mean Stain Integr Intens
✓ Positive W2 Mean Stain Integr Intens	✓ Negative W3 Mean Stain Aver Intens
✓ Positive W2 Mean Stain Aver Intens	✓ Negative W3 Mean Nucl Integr Intens
✓ Positive W2 Mean Nucl Integr Intens	✓ Negative W3 Mean Nucl Aver Intens
✓ Positive W2 Mean Nucl Aver Intens	✓ Negative W3 Mean Cyto Integr Intens
✓ Positive W2 Mean Cyto Integr Intens	✓ Negative W3 Mean Cyto Aver Intens
✓ Positive W2 Mean Cyto Aver Intens	✓ Negative W3 Mean Cell Integr Intens
✓ Positive W2 Mean Cell Integr Intens	✓ Negative W3 Mean Cell Aver Intens
✓ Positive W2 Mean Cell Aver Intens	✓ Positive W3
✓ Negative W2 Mean Stain Area	✓ % Positive W3
✓ Negative W2 Mean Stain Integr Intens	✓ Scoring Profile 1--
✓ Negative W2 Mean Stain Aver Intens	✓ Scoring Profile 12-
✓ Negative W2 Mean Nucl Integr Intens	✓ Scoring Profile 1-3
✓ Negative W2 Mean Nucl Aver Intens	✓ Scoring Profile 123
✓ Negative W2 Mean Cyto Integr Intens	✓ Percentage Scoring Profile 1--
✓ Negative W2 Mean Cyto Aver Intens	✓ Percentage Scoring Profile 12-
✓ Negative W2 Mean Cell Integr Intens	✓ Percentage Scoring Profile 1-3
✓ Negative W2 Mean Cell Aver Intens	✓ Percentage Scoring Profile 123
✓ Positive W2	✓ Subtotal Profile 1xx
✓ % Positive W2	✓ Subtotal Profile 12x
✓ All W3 Mean Stain Area	✓ Subtotal Profile 1x3
✓ All W3 Mean Stain Integr Intens	✓ Subtotal Profile 123
✓ All W3 Mean Stain Aver Intens	✓ Percentage Subtotal Profile 1xx
✓ All W3 Mean Nucl Integr Intens	✓ Percentage Subtotal Profile 12x
✓ All W3 Mean Nucl Aver Intens	✓ Percentage Subtotal Profile 1x3
✓ All W3 Mean Cyto Integr Intens	✓ Percentage Subtotal Profile 123

- **Scoring Profile 1--:** The total number of cells positive for W1, negative for W2 and negative for W3
- **Scoring Profile 12-:** The total number of cells positive for W1, positive for W2 and negative for W3
- **Scoring Profile 1-3:** The total number of cells positive for W1, negative for W2 and positive for W3
- **Scoring Profile 123:** The total number of cells positive for W1, W2 and W3
- *(similar for additional wavelengths)*

Summary Data (site-by-site measurements)

✓ Total Cells	✓ All W3 Mean Cyto Integr Intens
✓ All Cells Mean Area	✓ All W3 Mean Cyto Aver Intens
✓ All Nuclei Mean Area	✓ All W3 Mean Cell Integr Intens
✓ All Nuclei Mean Integr Intensity	✓ All W3 Mean Cell Aver Intens
✓ All Nuclei Mean Average Intensity	✓ Positive W3 Mean Stain Area
✓ All W2 Mean Stain Area	✓ Positive W3 Mean Stain Integr Intens
✓ All W2 Mean Stain Integr Intens	✓ Positive W3 Mean Stain Aver Intens
✓ All W2 Mean Stain Aver Intens	✓ Positive W3 Mean Nucl Integr Intens
✓ All W2 Mean Nucl Integr Intens	✓ Positive W3 Mean Nucl Aver Intens
✓ All W2 Mean Nucl Aver Intens	✓ Positive W3 Mean Cyto Integr Intens
✓ All W2 Mean Cyto Integr Intens	✓ Positive W3 Mean Cyto Aver Intens
✓ All W2 Mean Cyto Aver Intens	✓ Positive W3 Mean Cell Integr Intens
✓ All W2 Mean Cell Integr Intens	✓ Positive W3 Mean Cell Aver Intens
✓ All W2 Mean Cell Aver Intens	✓ Negative W3 Mean Stain Area
✓ Positive W2 Mean Stain Area	✓ Negative W3 Mean Stain Integr Intens
✓ Positive W2 Mean Stain Integr Intens	✓ Negative W3 Mean Stain Aver Intens
✓ Positive W2 Mean Stain Aver Intens	✓ Negative W3 Mean Nucl Integr Intens
✓ Positive W2 Mean Nucl Integr Intens	✓ Negative W3 Mean Nucl Aver Intens
✓ Positive W2 Mean Nucl Aver Intens	✓ Negative W3 Mean Cyto Integr Intens
✓ Positive W2 Mean Cyto Integr Intens	✓ Negative W3 Mean Cyto Aver Intens
✓ Positive W2 Mean Cyto Aver Intens	✓ Negative W3 Mean Cell Integr Intens
✓ Positive W2 Mean Cell Integr Intens	✓ Negative W3 Mean Cell Aver Intens
✓ Positive W2 Mean Cell Aver Intens	✓ Positive W3
✓ Negative W2 Mean Stain Area	✓ % Positive W3
✓ Negative W2 Mean Stain Integr Intens	✓ Scoring Profile 1--
✓ Negative W2 Mean Stain Aver Intens	✓ Scoring Profile 12-
✓ Negative W2 Mean Nucl Integr Intens	✓ Scoring Profile 1-3
✓ Negative W2 Mean Nucl Aver Intens	✓ Scoring Profile 123
✓ Negative W2 Mean Cyto Integr Intens	✓ Percentage Scoring Profile 1--
✓ Negative W2 Mean Cyto Aver Intens	✓ Percentage Scoring Profile 12-
✓ Negative W2 Mean Cell Integr Intens	✓ Percentage Scoring Profile 1-3
✓ Negative W2 Mean Cell Aver Intens	✓ Percentage Scoring Profile 123
✓ Positive W2	✓ Subtotal Profile 1xx
✓ % Positive W2	✓ Subtotal Profile 12x
✓ All W3 Mean Stain Area	✓ Subtotal Profile 1x3
✓ All W3 Mean Stain Integr Intens	✓ Subtotal Profile 123
✓ All W3 Mean Stain Aver Intens	✓ Percentage Subtotal Profile 1xx
✓ All W3 Mean Nucl Integr Intens	✓ Percentage Subtotal Profile 12x
✓ All W3 Mean Nucl Aver Intens	✓ Percentage Subtotal Profile 1x3
✓ All W3 Mean Cyto Integr Intens	✓ Percentage Subtotal Profile 123

- **Percentage Scoring Profile 1--:** The number of cells positive for W1, negative for W2 and negative for W3, divided by the total number of cells, times 100
- **Percentage Scoring Profile 12-:** The number of cells positive for W1, positive for W2 and negative for W3, divided by the total number of cells, times 100
- **Percentage Scoring Profile 1-3:** The number of cells positive for W1, negative for W2 and positive for W3, divided by the total number of cells, times 100
- **Percentage Scoring Profile 123:** The number of cells positive for W1, W2 and W3, divided by the total number of cells, times 100
- *(similar for additional wavelengths)*

Summary Data (site-by-site measurements)

- ✓ Total Cells
- ✓ All Cells Mean Area
- ✓ All Nuclei Mean Area
- ✓ All Nuclei Mean Integr Intensity
- ✓ All Nuclei Mean Average Intensity
- ✓ All W2 Mean Stain Area
- ✓ All W2 Mean Stain Integr Intens
- ✓ All W2 Mean Stain Aver Intens
- ✓ All W2 Mean Nucl Integr Intens
- ✓ All W2 Mean Nucl Aver Intens
- ✓ All W2 Mean Cyto Integr Intens
- ✓ All W2 Mean Cyto Aver Intens
- ✓ All W2 Mean Cell Integr Intens
- ✓ All W2 Mean Cell Aver Intens
- ✓ Positive W2 Mean Stain Area
- ✓ Positive W2 Mean Stain Integr Inten
- ✓ Positive W2 Mean Stain Aver Intens
- ✓ Positive W2 Mean Nucl Integr Intens
- ✓ Positive W2 Mean Nucl Aver Intens
- ✓ Positive W2 Mean Cyto Integr Intens
- ✓ Positive W2 Mean Cyto Aver Intens
- ✓ Positive W2 Mean Cell Integr Intens
- ✓ Positive W2 Mean Cell Aver Intens
- ✓ Negative W2 Mean Stain Area
- ✓ Negative W2 Mean Stain Integr Inten
- ✓ Negative W2 Mean Stain Aver Inten
- ✓ Negative W2 Mean Nucl Integr Inter
- ✓ Negative W2 Mean Nucl Aver Intens
- ✓ Negative W2 Mean Cyto Integr Inten
- ✓ Negative W2 Mean Cyto Aver Intens
- ✓ Negative W2 Mean Cell Integr Intens
- ✓ Negative W2 Mean Cell Aver Intens
- ✓ Positive W2
- ✓ % Positive W2
- ✓ All W3 Mean Stain Area
- ✓ All W3 Mean Stain Integr Intens
- ✓ All W3 Mean Stain Aver Intens
- ✓ All W3 Mean Nucl Integr Intens
- ✓ All W3 Mean Nucl Aver Inten
- ✓ All W3 Mean Cyto Integr Intens
- ✓ All W3 Mean Cyto Aver Intens
- ✓ All W3 Mean Cell Integr Intens
- ✓ All W3 Mean Cell Aver Intens
- ✓ Positive W3 Mean Stain Area
- ✓ Positive W3 Mean Stain Integr Intens
- ✓ Positive W3 Mean Stain Aver Intens
- ✓ Positive W3 Mean Nucl Integr Intens
- ✓ Positive W3 Mean Nucl Aver Intens
- ✓ Positive W3 Mean Cyto Integr Intens
- ✓ Positive W3 Mean Cyto Aver Intens
- ✓ Positive W3 Mean Cell Integr Intens
- ✓ Positive W3 Mean Cell Aver Intens
- ✓ Negative W3 Mean Stain Area
- ✓ Negative W3 Mean Stain Integr Intens
- ✓ Negative W3 Mean Stain Aver Intens
- ✓ Negative W3 Mean Nucl Integr Intens
- ✓ Negative W3 Mean Nucl Aver Intens
- ✓ Negative W3 Mean Cyto Integr Intens
- ✓ Negative W3 Mean Cyto Aver Intens
- ✓ Negative W3 Mean Cell Integr Intens
- ✓ Negative W3 Mean Cell Aver Intens
- ✓ Positive W3
- ✓ % Positive W3
- ✓ Scoring Profile 1-
- ✓ Scoring Profile 12-
- ✓ Scoring Profile 1-3
- ✓ Scoring Profile 123
- ✓ Percentage Scoring Profile 1-
- ✓ Percentage Scoring Profile 12-
- ✓ Percentage Scoring Profile 1-3
- ✓ Percentage Scoring Profile 123
- ✓ Subtotal Profile 1xx
- ✓ Subtotal Profile 12x
- ✓ Subtotal Profile 1x3
- ✓ Subtotal Profile 123
- ✓ Percentage Subtotal Profile 1xx
- ✓ Percentage Subtotal Profile 12x
- ✓ Percentage Subtotal Profile 1x3
- ✓ Percentage Subtotal Profile 123

- **Subtotal Profile 1xx:** The total number of cells positive for W1, and either positive or negative for W2 and W3
- **Subtotal Profile 12x:** The total number of cells positive for W1 and W2, and either positive or negative for W3
- **Subtotal Profile 1x3:** The total number of cells positive for W1 and W3, and either positive or negative for W2
- **Subtotal Profile 123:** The total number of cells positive for W1, W2 and W3
- *(similar for additional wavelengths)*

Summary Data (site-by-site measurements)

- ✓ Total Cells
- ✓ All Cells Mean Area
- ✓ All Nuclei Mean Area
- ✓ All Nuclei Mean Integr Intensity
- ✓ All Nuclei Mean Average Intensity
- ✓ All W2 Mean Stain Area
- ✓ All W2 Mean Stain Integr Intens
- ✓ All W2 Mean Stain Aver Intens
- ✓ All W2 Mean Nucl Integr Intens
- ✓ All W2 Mean Nucl Aver Intens
- ✓ All W2 Mean Cyto Integr Intens
- ✓ All W2 Mean Cyto Aver Intens
- ✓ All W2 Mean Cell Integr Intens
- ✓ All W2 Mean Cell Aver Intens
- ✓ Positive W2 Mean Stain Area
- ✓ Positive W2 Mean Stain Integr Inten
- ✓ Positive W2 Mean Stain Aver Intens
- ✓ Positive W2 Mean Nucl Integr Intens
- ✓ Positive W2 Mean Nucl Aver Intens
- ✓ Positive W2 Mean Cyto Integr Intens
- ✓ Positive W2 Mean Cyto Aver Intens
- ✓ Positive W2 Mean Cell Integr Intens
- ✓ Positive W2 Mean Cell Aver Intens
- ✓ Negative W2 Mean Stain Area
- ✓ Negative W2 Mean Stain Integr Inten
- ✓ Negative W2 Mean Stain Aver Inten
- ✓ Negative W2 Mean Nucl Integr Inter
- ✓ Negative W2 Mean Nucl Aver Intens
- ✓ Negative W2 Mean Cyto Integr Inten
- ✓ Negative W2 Mean Cyto Aver Intens
- ✓ Negative W2 Mean Cell Integr Intens
- ✓ Negative W2 Mean Cell Aver Intens
- ✓ Positive W2
- ✓ % Positive W2
- ✓ All W3 Mean Stain Area
- ✓ All W3 Mean Stain Integr Intens
- ✓ All W3 Mean Stain Aver Intens
- ✓ All W3 Mean Nucl Integr Intens
- ✓ All W3 Mean Nucl Aver Inten
- ✓ All W3 Mean Cyto Integr Intens
- ✓ All W3 Mean Cyto Aver Intens
- ✓ All W3 Mean Cell Integr Intens
- ✓ All W3 Mean Cell Aver Intens
- ✓ Positive W3 Mean Stain Area
- ✓ Positive W3 Mean Stain Integr Intens
- ✓ Positive W3 Mean Stain Aver Intens
- ✓ Positive W3 Mean Nucl Integr Intens
- ✓ Positive W3 Mean Nucl Aver Intens
- ✓ Positive W3 Mean Cyto Integr Intens
- ✓ Positive W3 Mean Cyto Aver Intens
- ✓ Positive W3 Mean Cell Integr Intens
- ✓ Positive W3 Mean Cell Aver Intens
- ✓ Negative W3 Mean Stain Area
- ✓ Negative W3 Mean Stain Integr Intens
- ✓ Negative W3 Mean Stain Aver Intens
- ✓ Negative W3 Mean Nucl Integr Intens
- ✓ Negative W3 Mean Nucl Aver Intens
- ✓ Negative W3 Mean Cyto Integr Intens
- ✓ Negative W3 Mean Cyto Aver Intens
- ✓ Negative W3 Mean Cell Integr Intens
- ✓ Negative W3 Mean Cell Aver Intens
- ✓ Positive W3
- ✓ % Positive W3
- ✓ Scoring Profile 1-
- ✓ Scoring Profile 12-
- ✓ Scoring Profile 1-3
- ✓ Scoring Profile 123
- ✓ Percentage Scoring Profile 1-
- ✓ Percentage Scoring Profile 12-
- ✓ Percentage Scoring Profile 1-3
- ✓ Percentage Scoring Profile 123
- ✓ Subtotal Profile 1xx
- ✓ Subtotal Profile 12x
- ✓ Subtotal Profile 1x3
- ✓ Subtotal Profile 123
- ✓ Percentage Subtotal Profile 1xx
- ✓ Percentage Subtotal Profile 12x
- ✓ Percentage Subtotal Profile 1x3
- ✓ Percentage Subtotal Profile 123

- **Percentage Subtotal Profile 1xx:** The number of cells positive for W1, and either positive or negative for W2 and W3, divided by the total number of cells, times 100
- **Percentage Subtotal Profile 12x:** The number of cells positive for W1 and W2, and either positive or negative for W3, divided by the total number of cells, times 100
- **Percentage Subtotal Profile 1x3:** The number of cells positive for W1 and W3, and either positive or negative for W2, divided by the total number of cells, times 100
- **Percentage Subtotal Profile 123:** The number of cells positive for W1, W2 and W3, divided by the total number of cells, times 100
- *(similar for additional wavelengths)*

Cell Data (cell-by-cell measurements)

- ✓ Cell: Assigned Label #
- ✓ Cell: Scoring Profile
- ✓ Cell: Custom Profile Name
- ✓ Cell: Total Area
- ✓ W1 Stained Area
- ✓ W1 Integrated Intensity
- ✓ W1 Average Intensity
- ✓ Cell: Positive W2
- ✓ Cell: W2 Stained Area
- ✓ Cell: W2 Stained Integr Intensity
- ✓ Cell: W2 Stained Average Intensity
- ✓ Cell: W2 Nucleus Integr Intensity
- ✓ Cell: W2 Nucleus Average Intensity
- ✓ Cell: W2 Cytoplasm Integr Intensity
- ✓ Cell: W2 Cytoplasm Average Intensity
- ✓ Cell: W2 Cell Integr Intensity
- ✓ Cell: W2 Cell Average Intensity
- ✓ Cell: Positive W3
- ✓ Cell: W3 Stained Area
- ✓ Cell: W3 Stained Integr Intensity
- ✓ Cell: W3 Stained Average Intensity
- ✓ Cell: W3 Nucleus Integr Intensity
- ✓ Cell: W3 Nucleus Average Intensity
- ✓ Cell: W3 Cytoplasm Integr Intensity
- ✓ Cell: W3 Cytoplasm Average Intensity
- ✓ Cell: W3 Cell Integr Intensity
- ✓ Cell: W3 Cell Average Intensity

- **Cell: Assigned Label #** – Cell label number (1 through total cell number)
- **Cell: Scoring Profile** – The profile for this cell, i.e. “1—” or “12-” or “1-3” or “123”
- **Cell: Custom Profile Name** – The user-defined profile for this cell, as specified in the legend (e.g. “A positive”, “Double positive”)

Cell Data (cell-by-cell measurements)

- ✓ Cell: Assigned Label #
- ✓ Cell: Scoring Profile
- ✓ Cell: Custom Profile Name
- ✓ Cell: Total Area
- ✓ W1 Stained Area
- ✓ W1 Integrated Intensity
- ✓ W1 Average Intensity
- ✓ Cell: Positive W2
- ✓ Cell: W2 Stained Area
- ✓ Cell: W2 Stained Integr Intensity
- ✓ Cell: W2 Stained Average Intensity
- ✓ Cell: W2 Nucleus Integr Intensity
- ✓ Cell: W2 Nucleus Average Intensity
- ✓ Cell: W2 Cytoplasm Integr Intensity
- ✓ Cell: W2 Cytoplasm Average Intensity
- ✓ Cell: W2 Cell Integr Intensity
- ✓ Cell: W2 Cell Average Intensity
- ✓ Cell: Positive W3
- ✓ Cell: W3 Stained Area
- ✓ Cell: W3 Stained Integr Intensity
- ✓ Cell: W3 Stained Average Intensity
- ✓ Cell: W3 Nucleus Integr Intensity
- ✓ Cell: W3 Nucleus Average Intensity
- ✓ Cell: W3 Cytoplasm Integr Intensity
- ✓ Cell: W3 Cytoplasm Average Intensity
- ✓ Cell: W3 Cell Integr Intensity
- ✓ Cell: W3 Cell Average Intensity

- **Cell: Total Area** – Total square microns of the cell (nucleus + cytoplasm as defined by the combination of all wavelengths)
- **W1 Stained Area** – Total square microns of the nucleus as defined by the W1 stain
- **W1 Integrated Intensity** – Total pixel intensity of the nuclear stain in the nucleus
- **W1 Average Intensity** – Average pixel intensity of the nuclear stain in the nucleus

Cell Data (cell-by-cell measurements)

- ✓ Cell: Assigned Label #
- ✓ Cell: Scoring Profile
- ✓ Cell: Custom Profile Name
- ✓ Cell: Total Area
- ✓ W1 Stained Area
- ✓ W1 Integrated Intensity
- ✓ W1 Average Intensity
- ✓ Cell: Positive W2
- ✓ Cell: W2 Stained Area
- ✓ Cell: W2 Stained Integr Intensity
- ✓ Cell: W2 Stained Average Intensity
- ✓ Cell: W2 Nucleus Integr Intensity
- ✓ Cell: W2 Nucleus Average Intensity
- ✓ Cell: W2 Cytoplasm Integr Intensity
- ✓ Cell: W2 Cytoplasm Average Intensity
- ✓ Cell: W2 Cell Integr Intensity
- ✓ Cell: W2 Cell Average Intensity
- ✓ Cell: Positive W3
- ✓ Cell: W3 Stained Area
- ✓ Cell: W3 Stained Integr Intensity
- ✓ Cell: W3 Stained Average Intensity
- ✓ Cell: W3 Nucleus Integr Intensity
- ✓ Cell: W3 Nucleus Average Intensity
- ✓ Cell: W3 Cytoplasm Integr Intensity
- ✓ Cell: W3 Cytoplasm Average Intensity
- ✓ Cell: W3 Cell Integr Intensity
- ✓ Cell: W3 Cell Average Intensity

- **Cell: Positive W2** – Classification of the cell as positive for staining in wavelength 2 (value of 1) or negative for staining in wavelength 2 (value of 0)
- **Cell: W2 Stained Area** – Total square microns of the area stained by W2 as defined in the settings (nucleus, cytoplasm, or nucleus + cytoplasm)
- **Cell: W2 Stained Integr Intensity** – Total pixel intensity of the W2 stain in the defined area
- **Cell: W2 Stained Average Intensity** – Average pixel intensity of the W2 stain in the defined area
- *(similar for W3-W7)*

Cell Data (cell-by-cell measurements)

- ✓ Cell: Assigned Label #
- ✓ Cell: Scoring Profile
- ✓ Cell: Custom Profile Name
- ✓ Cell: Total Area
- ✓ W1 Stained Area
- ✓ W1 Integrated Intensity
- ✓ W1 Average Intensity
- ✓ Cell: Positive W2
- ✓ Cell: W2 Stained Area
- ✓ Cell: W2 Stained Integr Intensity
- ✓ Cell: W2 Stained Average Intensity
- ✓ Cell: W2 Nucleus Integr Intensity
- ✓ Cell: W2 Nucleus Average Intensity
- ✓ Cell: W2 Cytoplasm Integr Intensity
- ✓ Cell: W2 Cytoplasm Average Intensity
- ✓ Cell: W2 Cell Integr Intensity
- ✓ Cell: W2 Cell Average Intensity
- ✓ Cell: Positive W3
- ✓ Cell: W3 Stained Area
- ✓ Cell: W3 Stained Integr Intensity
- ✓ Cell: W3 Stained Average Intensity
- ✓ Cell: W3 Nucleus Integr Intensity
- ✓ Cell: W3 Nucleus Average Intensity
- ✓ Cell: W3 Cytoplasm Integr Intensity
- ✓ Cell: W3 Cytoplasm Average Intensity
- ✓ Cell: W3 Cell Integr Intensity
- ✓ Cell: W3 Cell Average Intensity

- **Cell: W2 Nucleus Integr Intensity** – Total pixel intensity of the W2 stain in the nucleus
- **Cell: W2 Nucleus Average Intensity** – Average pixel intensity of the W2 stain in the nucleus
- *(similar for W3-W7)*

Cell Data (cell-by-cell measurements)

- ✓ Cell: Assigned Label #
- ✓ Cell: Scoring Profile
- ✓ Cell: Custom Profile Name
- ✓ Cell: Total Area
- ✓ W1 Stained Area
- ✓ W1 Integrated Intensity
- ✓ W1 Average Intensity
- ✓ Cell: Positive W2
- ✓ Cell: W2 Stained Area
- ✓ Cell: W2 Stained Integr Intensity
- ✓ Cell: W2 Stained Average Intensity
- ✓ Cell: W2 Nucleus Integr Intensity
- ✓ Cell: W2 Nucleus Average Intensity
- ✓ Cell: W2 Cytoplasm Integr Intensity
- ✓ Cell: W2 Cytoplasm Average Intensity
- ✓ Cell: W2 Cell Integr Intensity
- ✓ Cell: W2 Cell Average Intensity
- ✓ Cell: Positive W3
- ✓ Cell: W3 Stained Area
- ✓ Cell: W3 Stained Integr Intensity
- ✓ Cell: W3 Stained Average Intensity
- ✓ Cell: W3 Nucleus Integr Intensity
- ✓ Cell: W3 Nucleus Average Intensity
- ✓ Cell: W3 Cytoplasm Integr Intensity
- ✓ Cell: W3 Cytoplasm Average Intensity
- ✓ Cell: W3 Cell Integr Intensity
- ✓ Cell: W3 Cell Average Intensity

- **Cell: W2 Cytoplasm Integr Intensity** – Total pixel intensity of the W2 stain in the cytoplasm
- **Cell: W2 Cytoplasm Average Intensity** – Average pixel intensity of the W2 stain in the cytoplasm
- *(similar for W3-W7)*

Cell Data (cell-by-cell measurements)

- ✓ Cell: Assigned Label #
- ✓ Cell: Scoring Profile
- ✓ Cell: Custom Profile Name
- ✓ Cell: Total Area
- ✓ W1 Stained Area
- ✓ W1 Integrated Intensity
- ✓ W1 Average Intensity
- ✓ Cell: Positive W2
- ✓ Cell: W2 Stained Area
- ✓ Cell: W2 Stained Integr Intensity
- ✓ Cell: W2 Stained Average Intensity
- ✓ Cell: W2 Nucleus Integr Intensity
- ✓ Cell: W2 Nucleus Average Intensity
- ✓ Cell: W2 Cytoplasm Integr Intensity
- ✓ Cell: W2 Cytoplasm Average Intensity
- ✓ Cell: W2 Cell Integr Intensity
- ✓ Cell: W2 Cell Average Intensity
- ✓ Cell: Positive W3
- ✓ Cell: W3 Stained Area
- ✓ Cell: W3 Stained Integr Intensity
- ✓ Cell: W3 Stained Average Intensity
- ✓ Cell: W3 Nucleus Integr Intensity
- ✓ Cell: W3 Nucleus Average Intensity
- ✓ Cell: W3 Cytoplasm Integr Intensity
- ✓ Cell: W3 Cytoplasm Average Intensity
- ✓ Cell: W3 Cell Integr Intensity
- ✓ Cell: W3 Cell Average Intensity

- **Cell: W2 Cell Integr Intensity** – Total pixel intensity of the W2 stain in the cell (nucleus + cytoplasm)
- **Cell: W2 Cell Average Intensity** – Average pixel intensity of the W2 stain in the cell (nucleus + cytoplasm)
- *(similar for W3-W7)*



Together through life sciences.

www.moleculardevices.com